

WAAS CH 86919 W17A	APP CRS 174°	Rwy Ldg 5997 TDZE 1073 Apt Elev 1073
--	------------------------	---

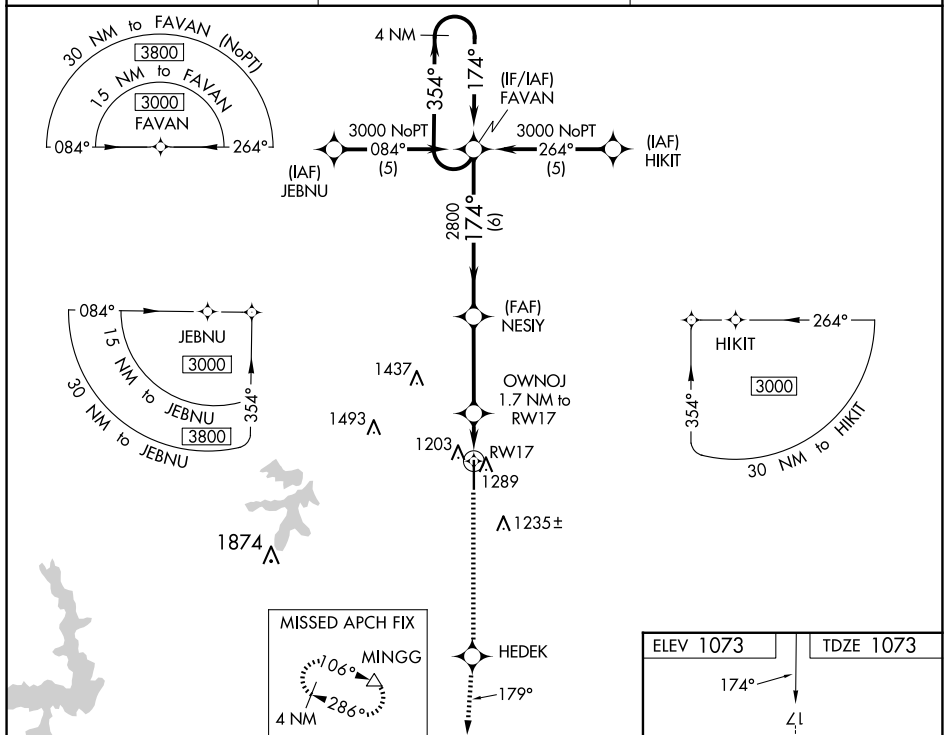
RNAV (GPS) RWY 17
SHAWNEE RGNL (SNL)

▼ Baro-VNAV NA when using Seminole altimeter setting. For uncompensated
▲ Baro-VNAV systems, LNAV/VNAV NA below -17°C (2°F) or above 54°C (130°F).
 DME/DME RNP-0.3 NA. When local altimeter setting not received, use Seminole
 altimeter setting: increase LPV DA to 1313 feet; increase LNAV/VNAV DA to
 1487 feet and visibility ¼ SM; increase all MDAs 40 feet and visibility Cat C ¼ SM.

MALSR

MISSED APPROACH: Climb to 4000 direct HEDEK and on track 179° to MINGG and hold.

AWOS-3PT 118.275	OKE CITY APP CON 120.45 288.325	UNICOM 122.7 (CTAF) 0
----------------------------	---	---------------------------------

[illegible]

CATEGORY	A	B	C	D
LPV DA	1273 ^{-1/2}	200 (200 ^{-1/2})		NA
LNAV/ VNAV DA	1447 ^{-3/4}	374 (400 ^{-3/4})		NA
LNAV MDA	1540 ^{-1/2}	467 (500 ^{-1/2})	1540 ^{-3/4} 467 (500 ^{-3/4})	NA
C CIRCLING	1600-1	527 (600-1)	1640-1 ^{1/2} 567 (600-1 ^{1/2})	NA

