

WAAS CH 77710 W34B	APP CRS 344°	Rwy Idg 9426 TDZE 387 Apt Elev 432
--	------------------------	---

RNAV (GPS) Y RWY 34C
SEATTLE-TACOMA INTL (SEA)

RNP APCH.

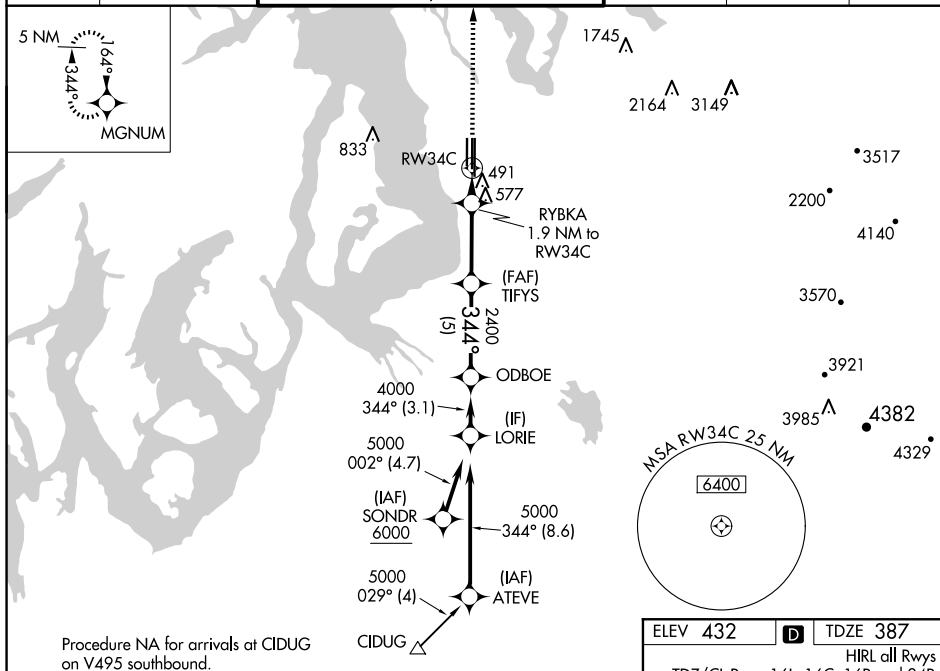
T Simultaneous approach authorized with Rwy 34L. LNAV procedure NA during simultaneous operations. Use of FD or AP providing RNAV track guidance required during simultaneous operations. For uncompensated Baro-VNAV systems, LNAV/VNAV NA below -6°C (22°F) or above 54°C (130°F).

MALSR



MISSED APPROACH: Climb to 5000 direct MGNM and hold, continue climb-in-hold to 5000.

D-ATIS 118.0	SEATTLE APP CON 133.65 273.45	SEATTLE TOWER 119.9 239.3 (Rwys 16L, 16C, 34C, 34R) 120.95 239.3 (Rwys 16R, 34L)	GND CON 121.7	CLNC DEL 128.0	CPDLC
------------------------	---	--	-------------------------	--------------------------	-------



NW-1, 07 AUG 2025 to 04 SEP 2025

NW-1, 07 AUG 2025 to 04 SEP 2025

