

APP CRS	Rwy Idg	8500
344°	TDZE	379
	Apt Elev	433

RNAV (RNP) Z RWY 34L

SEATTLE-TACOMA INTL (SEA)

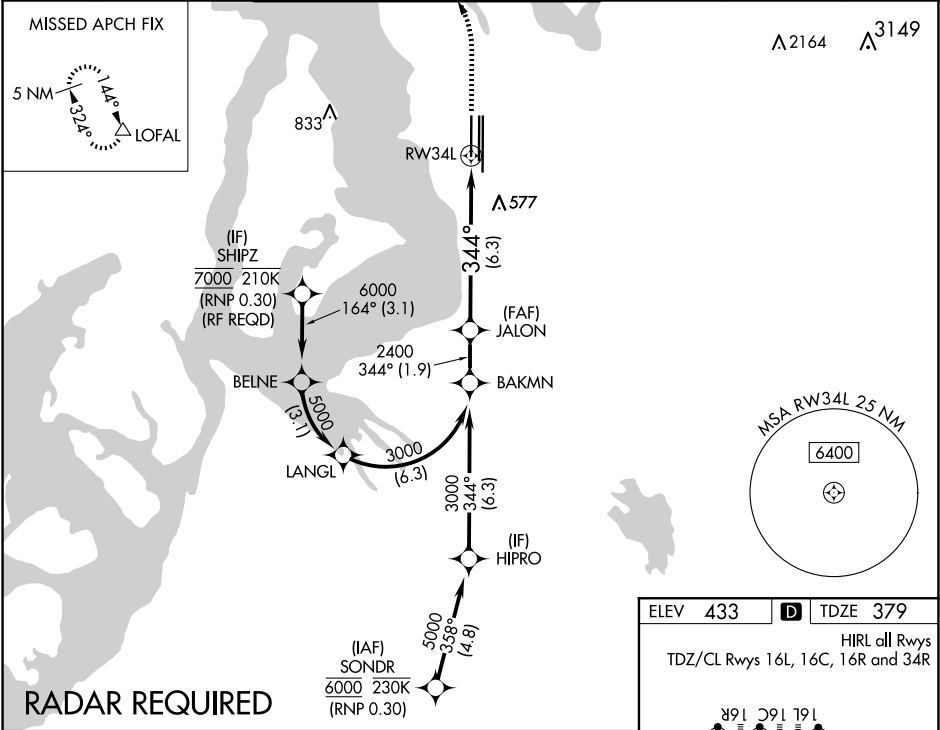
▼



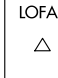
For uncompensated Baro-VNAV systems, procedure NA below -6°C (22°F) or above 54°C (130°F). Simultaneous approach authorized with Rwy 34R except for arrivals at SHIPZ. GPS required. Use of FD or AP providing RNAV track guidance required during simultaneous operations. For inop ALS, increase RNP 0.15 all Cats visibility to RVR 5000 and RNP 0.30 all Cats visibility to 1½ mile.

MALSR

MISSED APPROACH: Climb to 900 then climbing left turn to 5000 direct LOFAL and hold.

D-ATIS	SEATTLE APP CON	SEATTLE TOWER	GND CON	CLNC DEL	CPDLC
118.0	133.65 273.45	119.9 239.3 (Rwys 16L, 16C, 34C, 34R) 120.95 239.3 (Rwys 16R, 34L)	121.7	128.0	



VGSI and RNAV glidepath not coincident (VGSI Angle 3.00/TCH 75).											
BAKMN		JALON									
3000		2400									
<u>GP 3.00°</u>		<u>2400</u>									
TCH 55											
1.9 NM		6.3 NM									
CATEGORY		A		B		C		D			
RNP 0.15 DA		695/24 316 (300-½)				695/40 316 (300-¾)					
RNP 0.30 DA		787/50 408 (400-1)									
AUTHORIZATION REQUIRED											

