

APP CRS	Rwy Idg	9426
164°	TDZE	430
	Apt Elev	433

RNAV (RNP) Z RWY 16C
SEATTLE-TACOMA INTL (SEA)

T For uncompensated Baro-VNAV systems, procedure NA below -6°C (22°F) or above 54°C (130°F). GPS required. See additional requirements on adjacent information page. For inop ALS, increase RNP 0.12 all Cats visibility to RVR 5200, and increase RNP 0.30 all Cats visibility to 1½ SM.

ALSF-2



MISSED APPROACH: Climb direct ZIVDI to cross ZIVDI at or below 2000, then climb to 5000 on track 163° to MILLT and hold, continue climb-in-hold to 5000.

D-ATIS
118.0

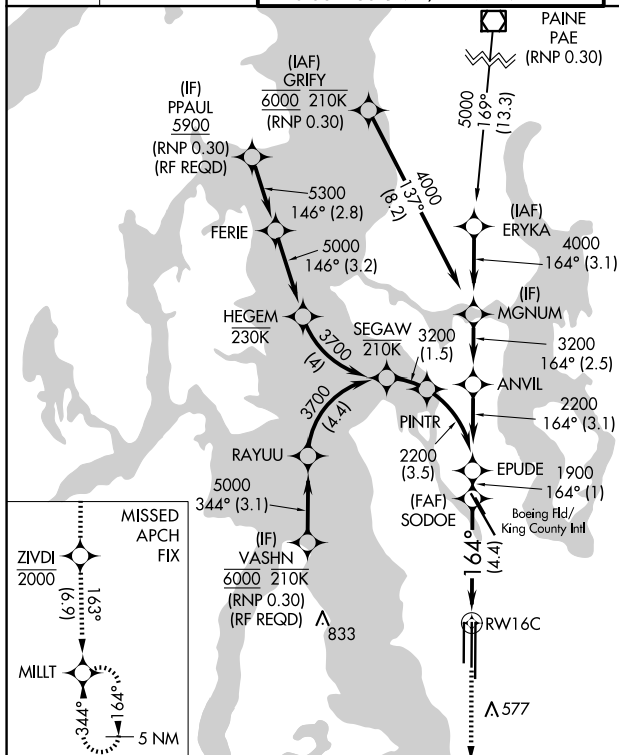
SEATTLE APP CON
133.65 273.45

SEATTLE TOWER	
119.9	239.3 (Rwys 16L, 16C, 34C, 34R)
120.95	239.3 (Rwys 16R, 34L)

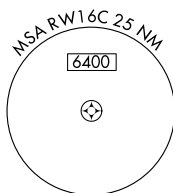
GND CON
121.7

CLNC DE
128.0

CPDLC



Procedure NA for arrival on PAE VOR/DME
airway radials 163 CW 236.

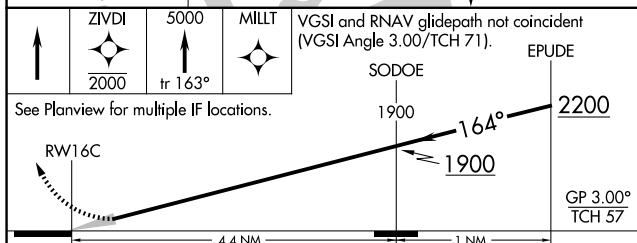


RADAR REQUIRED

A 1745

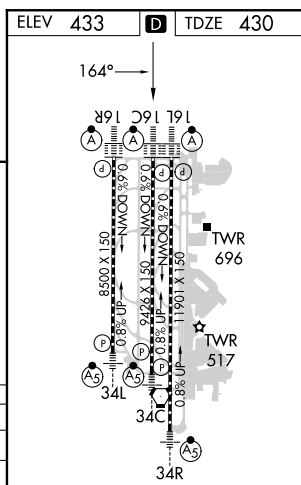
A 2164

3149



CATEGORY	A	B	C	D
RNP 0.12 DA		758/29	328 (400-%)	
RNP 0.30 DA		834/43	404 (500-%)	

AUTHORIZATION REQUIRED



HIRL all Rwy's
TDZ/CL Rwy's 16L, 16C, 16R and 34R

RNAV (RNP) Z RWY 16C