

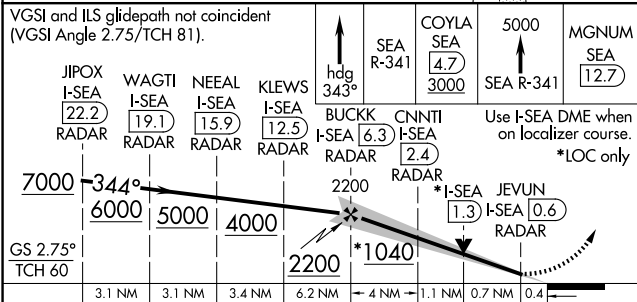
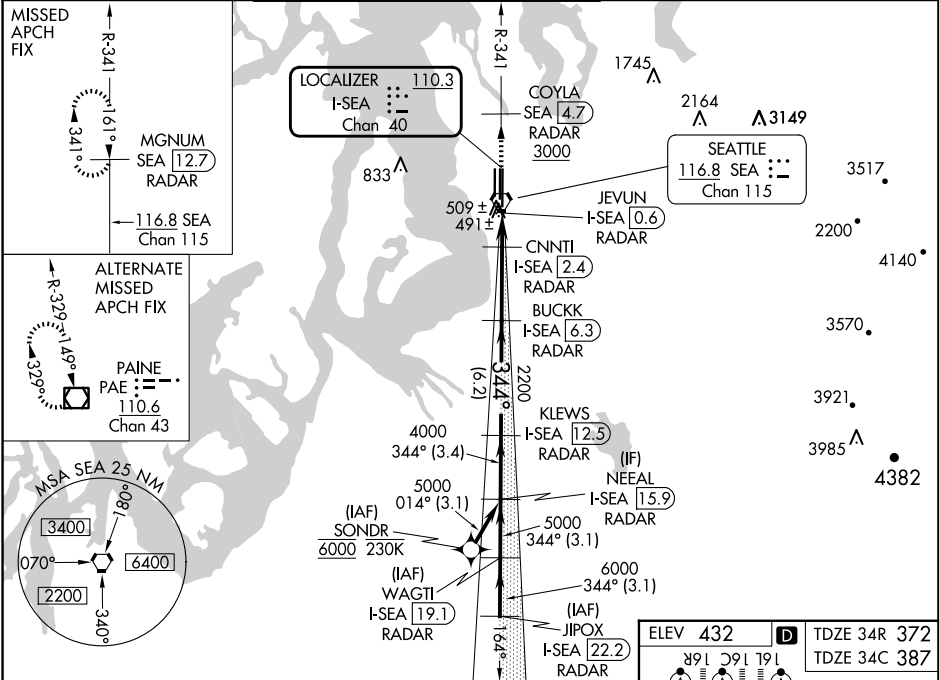
LOC/DME I-SEA <b>110.3</b> Chan <b>40</b>	APP CRS <b>344°</b>	Rwy Idg TDZE Apt Elev	34R <b>11901</b> <b>372</b> <b>432</b>	34C <b>9426</b> <b>387</b> <b>432</b>
---	------------------------	-----------------------------	---	--

ILS or LOC RWY 34R  
SEATTLE-TACOMA INTL (SEA)

From SONDR: RNAV 1-GPS required. DME or RADAR required.	MALSR Rwy 34R/C	MISSED APPROACH: Climb on heading 343° and outbound on SEA VORTAC R-341 to cross COYLA/ SEA 4.7 DME/RADAR at or above 3000 then climb to 5000 on SEA VORTAC R-341 to MGNUM/SEA 12.7 DME/RADAR and hold, continue climb-in-hold to 5000.
--	--------------------	---

Inop table does not apply to Sidestep 34C Cats A/B.  
Simultaneous approach authorized with Rwy 34L.

D-ATIS <b>118.0</b>	SEATTLE APP CON <b>133.65 273.45</b>	SEATTLE TOWER <b>119.9 239.3</b> (Rwys 16L, 16C, 34C, 34R) <b>120.95 239.3</b> (Rwys 16R, 34L)	GND CON <b>121.7</b>	CLNC DEL <b>128.0</b>	CPDLC
------------------------	---	--	-------------------------	--------------------------	-------



CATEGORY	A	B	C	D
S-ILS 34R		572/18	200 (200-½)	
S-LOC 34R	740/24	368 (400-½)	740/35	368 (400-¾)
SIDESTEP 34C	760/55	373 (400-1)	760-1½	373 (400-1½)
CIRCLING	1000-1	568 (600-1)	1000-1½	568 (600-2)

