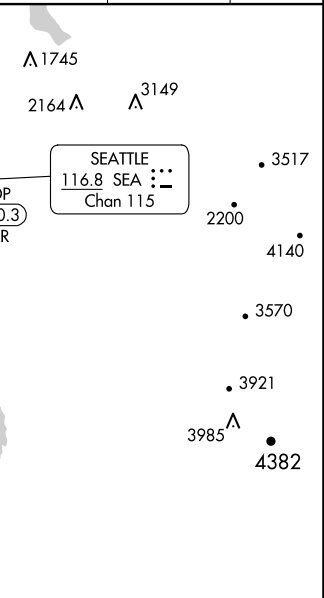


ILS or LOC RWY 34C  
SEATTLE-TACOMA INTL (SEA)

**MISSED APPROACH:** Climb on heading 345° and outbound on SEA VORTAC R-341 to cross COYLA/SEA 4.7 DME/RADAR at or above 3000 then climb to 5000 on SEA VORTAC R-341 to MGNUM/SEA 12.7 DME/RADAR and hold, continue climb-in-hold to 5000.

The circuit diagram shows a battery with four cells connected in series. A variable resistor, represented by a rectangle with a diagonal arrow pointing through it, is connected in series with the battery. An ammeter, represented by a circle with the letter 'A' inside, is also connected in series with the battery and the variable resistor. The circuit is a single loop.

GND CON <b>121.7</b>	CLNC DEL <b>128.0</b>	CPDLC
-------------------------	--------------------------	-------



NW-1, 07 AUG 2025 to 04 SEP 2025

