

LOC/DME I-SEA	APP CRS	Rwy Idg	11901
<b>110.3</b>	<b>344°</b>	TDZE	<b>372</b>
Chan <b>40</b>		Apt Elev	<b>432</b>

ILS RWY 34R (SA CAT I & II)

SEATTLE-TACOMA INTL (SEA)

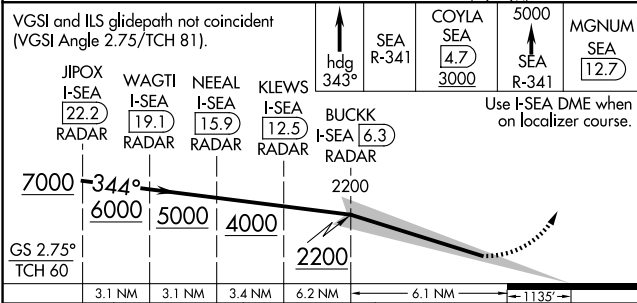
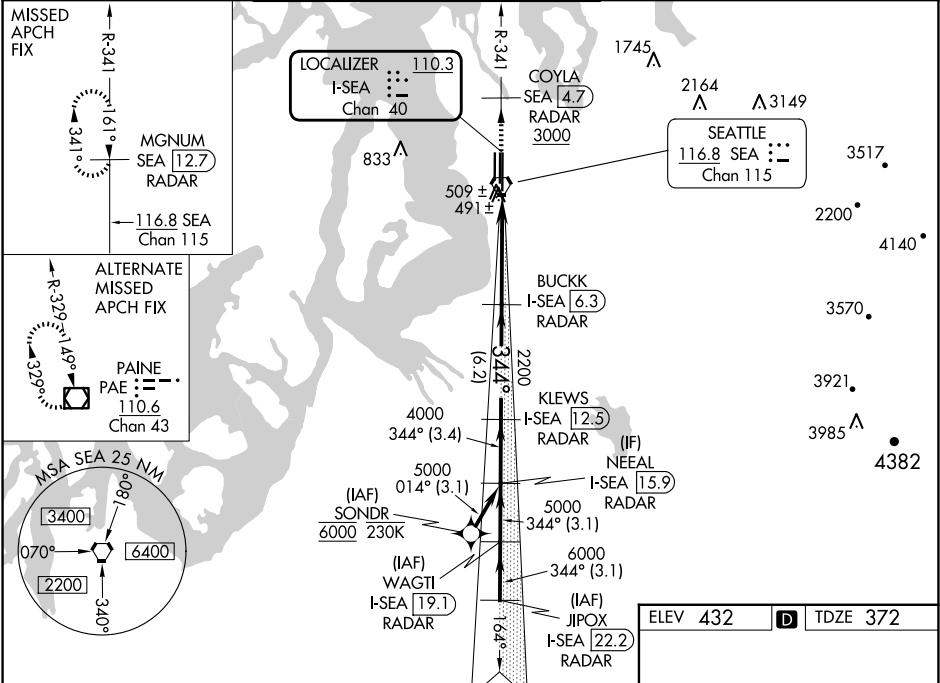
From SONDR: RNAV 1-GPS required. DME or RADAR required.

Simultaneous approach authorized with Rwy 34L. SA CAT I: Requires specific OPSPEC, MSPEC, or LOA approval and use of HUD to DH. SA CAT II: Reduced lighting: Requires specific OPSPEC, MSPEC, or LOA approval and use of autoland or HUD to touchdown.

MALSR

MISSED APPROACH: Climb on heading 343° and outbound on SEA VORTAC R-341 to cross COYLA/SEA 4.7 DME/RADAR at or above 3000 then climb to 5000 on SEA VORTAC R-341 to MGNUM/SEA 12.7 DME/RADAR and hold, continue climb-in-hold to 5000.

D-ATIS	SEATTLE APP CON	SEATTLE TOWER	GND CON	CLNC DEL	CPDLC
<b>118.0</b>	<b>133.65 273.45</b>	<b>119.9 239.3</b> (Rwys 16L, 16C, 34C, 34R) <b>120.95 239.3</b> (Rwys 16R, 34L)	<b>121.7</b>	<b>128.0</b>	



CATEGORY	A	B	C	D
S-ILS 34R	SA CAT I	RA 250/14	150	DA 522
S-ILS 34R	SA CAT II	RA 200/12	100	DA 472

SA CATEGORY I & II ILS - SPECIAL AIRCREW & AIRCRAFT CERTIFICATION REQUIRED

