

LOC/DME F-SNQ <b>110.3</b> Chan <b>40</b>	APP CRS <b>164°</b>	Rwy Idg <b>11901</b> TDZE <b>432</b> Apt Elev <b>432</b>
---	------------------------	--

ILS RWY 16L (SA CAT I)  
SEATTLE-TACOMA INTL (SEA)

DME or RADAR required. RNP APCH-GPS, from GRIFY.

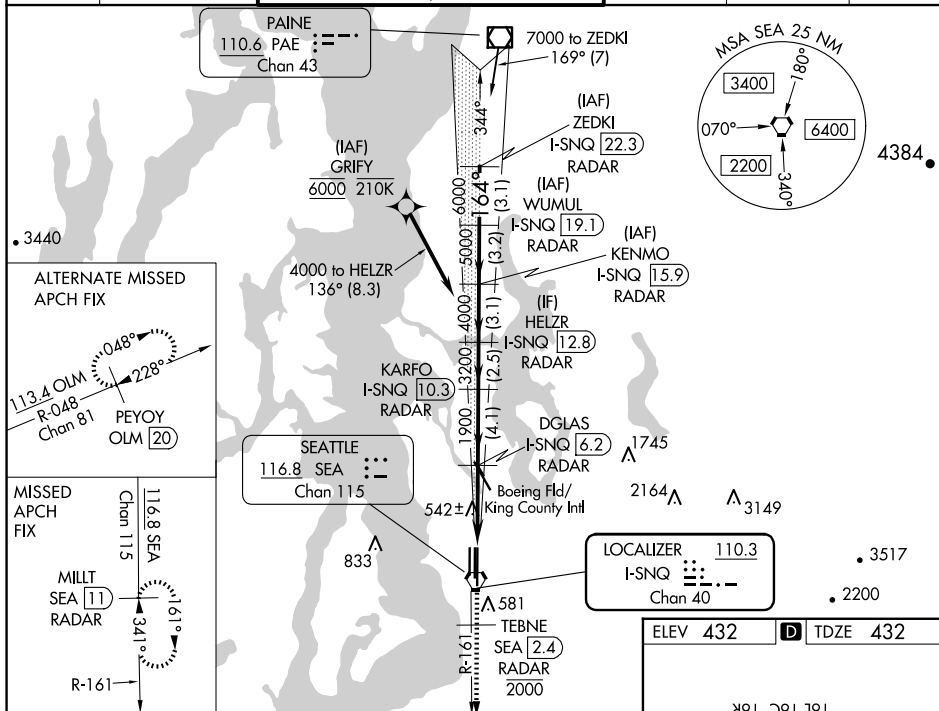
Simultaneous approach authorized.  
Requires specific OPSPEC, MSPEC, or LOA approval.

ALSF-2



**MISSED APPROACH:** Climb to 900 on heading 165° then on SEA VORTAC R-161 to cross TEBNE/SEA 2.4 DME/RADAR at or below 2000 then climb to 5000 on SEA VORTAC R-161 to MILIT/SEA 11 DME/RADAR and hold, continue climb-in-hold to 5000.

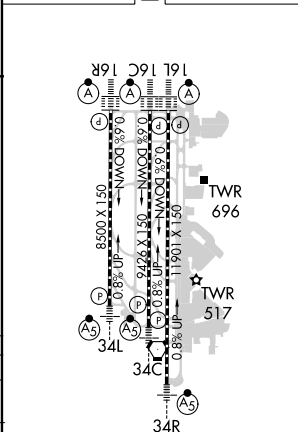
D-ATIS <b>118.0</b>	SEATTLE APP CON <b>133.65 273.45</b>	SEATTLE TOWER <b>119.9 239.3</b> (Rwys 16L, 16C, 34C, 34R) <b>120.95 239.3</b> (Rwys 16R, 34L)	GND CON <b>121.7</b>	CLNC DEL <b>128.0</b>	CPDLC
------------------------	---	--	-------------------------	--------------------------	-------



CATEGORY	A	B	C	D
S-ILS 16L	NA	RA 248/14 150 DA 582		

SA CATEGORY I ILS - SPECIAL AIRCREW  
& AIRCRAFT CERTIFICATION REQUIRED

ELEV 432	<b>D</b>	TDZE 432
----------	----------	----------



HIRL all Rwys  
TDZ/CL Rwys 16L, 16C, 16R and 34R

## ILS RWY 16L (SA CAT I)