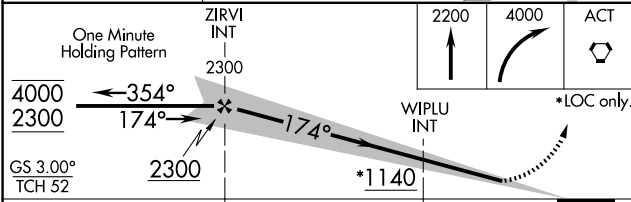
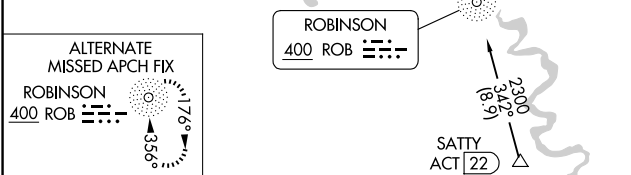
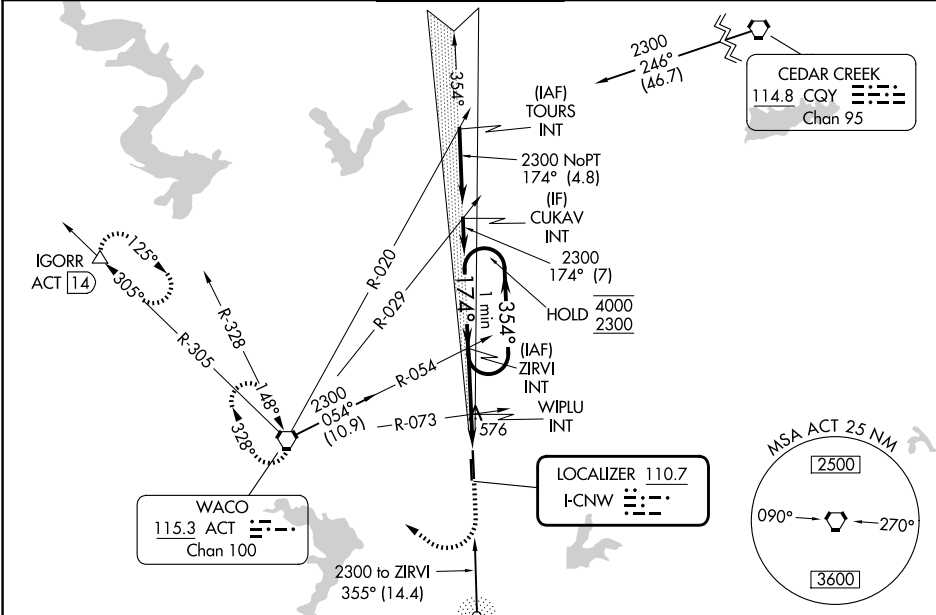


LOC I-CNW	APP CRS	Rwy Ldg	8600
110.7	174°	TDZE	470
		Apt Elev	470

ILS or LOC RWY 17L
TSTC WACO (CNW)

<div><div><div><div></div><div></div><div></div></div><div><div></div><div></div><div></div></div></div><div>NA</div><div>ASR</div></div>	For inop ALS, increase S-ILS 17L Cat E visibility to ¾ SM, and S-LOC 17L Cat E to 1½ SM.	<div><div><div></div><div></div><div></div></div><div></div></div> <div>MALSR</div>	MISSED APPROACH: Climb to 2200 then climbing right turn to 4000 direct ACT VORTAC and hold. (TACAN aircraft continue on ACT VORTAC R-305 to IGORR /ACT 14 DME and hold SE, RT, 305° inbound)		
AWOS-3PT 134.225	WACO APP CON ★ 127.65 227.125	TSTC TOWER ★ 124.0(CTAF) 255.7	GND CON 121.70	UNICOM 122.95	



CATEGORY	A	B	C	D	E
S-ILS 17L		670-½	200 (200-½)		
S-LOC 17L	860-½	390 (400-½)	860-⅝	390 (400-⅝)	
CIRCLING	940-1 470 (500-1)	1040-1 570 (600-1)	1040-1½ 570 (600-1½)	1120-2 650 (700-2)	1180-2½ 710 (800-2½)

