

RNAV (GPS) RWY 36

WAAS CH 63110 W36A	APCH CRS 004°	Rwy Idg 5025 TDZE 298 Arpt Elev 301
--	-------------------------	--

[USA]

CAIRNS AAF (KOZR)

RNP APCH - GPS

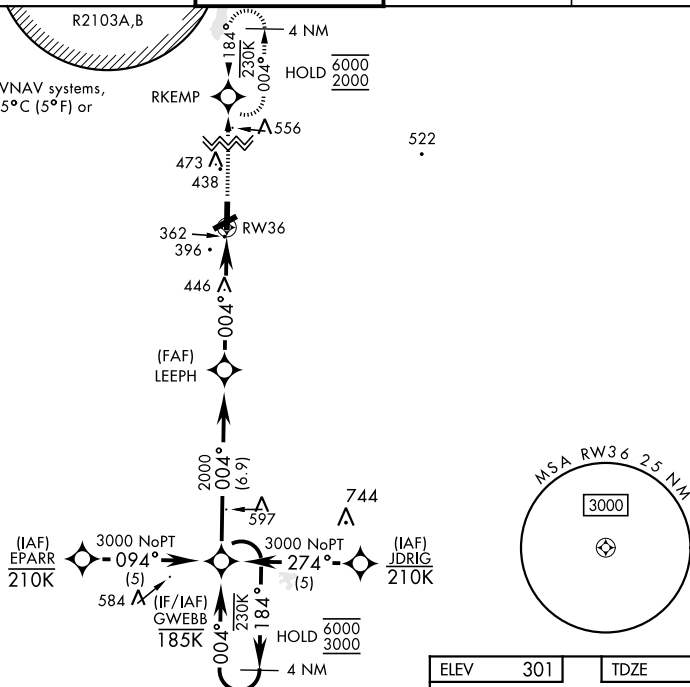


* Circling visibility reduction by helicopters not authorized.

MISSED APPROACH: Climb to 2000 direct RKEMP and hold.

ATIS	021°-120°	125.4	327.125	TOWER ★	GND CON ★	CLNC DEL ★
111.2	121°-219°	133.75	270.35	135.2 (CTAF)	121.9	118.075
316.15	220°-340°	133.45	239.275	248.55	288.25	380.1
	341°-020°	121.1	319.25			

For uncompensated BARO-VNAV systems, LNAV/VNAV NA below -15°C (5°F) or above 48°C (118°F).



SE-4, 07 AUG 2025 to 04 SEP 2025

4 NM
Holding Pattern GWEBB

6000
3000

184°
004°

004°

LEEPH

1.2 NM to RW36

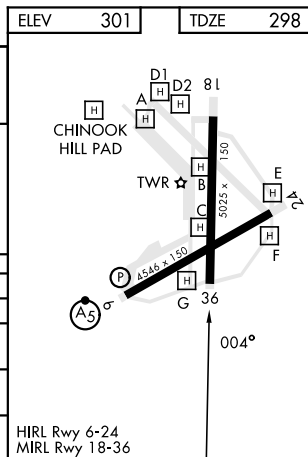
RW36

5.1 NM

2000

GP 3.00°
TCH 51

CATEGORY	A	B	C	D
LPV DA	548- $\frac{3}{4}$	250	(300- $\frac{3}{4}$)	
LNAV/ VNAV DA	557- $\frac{3}{4}$	259	(300- $\frac{3}{4}$)	
LNAV MDA	740-1	442 (500-1)	740-1 $\frac{3}{8}$	442 (500-1 $\frac{3}{8}$)
C CIRCLING*	780-1 479 (500-1)	820-1 519 (600-1)	900-1 $\frac{1}{2}$ 599 (600-1 $\frac{1}{2}$)	900-2 599 (600-2)



RNAV (GPS) RWY 36