

VORTAC GPT 109.0 Chan 27	APP CRS 140°	Rwy Idg 9002 TDZE 27 Apt Elev 28
--	------------------------	---

VOR Z or TACAN Z RWY 14
GULFPORT-BILOXI INTL (GPT)

DME required.

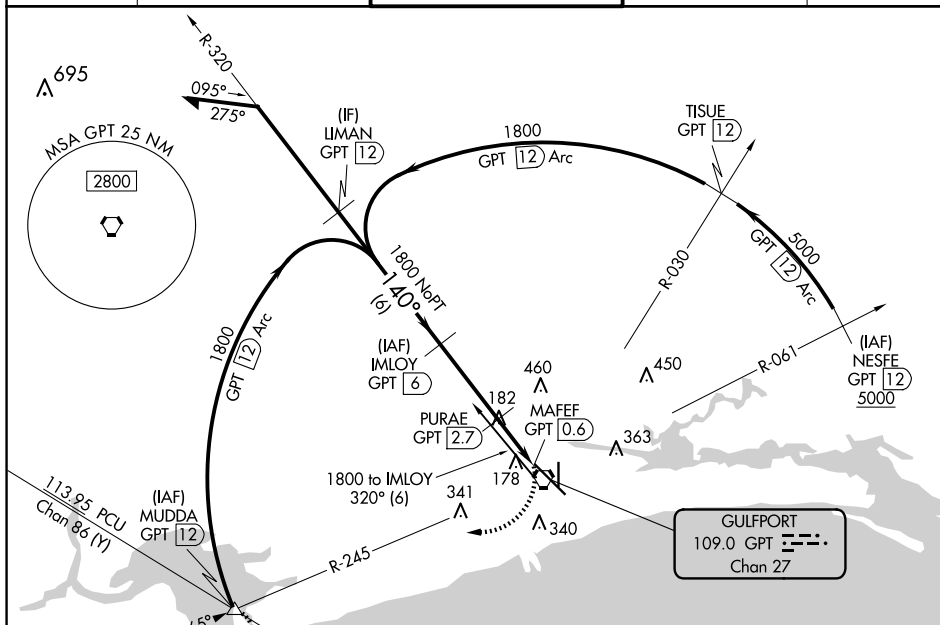
T
A For inop ALS, increase S-14 Cat C/D/E visibility to RVR 6000.

MALSR



MISSED APPROACH: Climbing right turn to 2000 on GPT VORTAC R-245 to MUDDA INT/12 DME and hold.

ATIS 119.45	GULFPORT APP CON ★ 127.5 254.25	GULFPORT TOWER ★ 123.7 (CTAF) 0 339.8	GND CON 120.4 348.6	UNICOM 122.95
-----------------------	---	---	-------------------------------	-------------------------



Remain within 15 NM

IMLOY GPT 6

320°

1800

140°

1800

140°

680

140°

VGSi and descent angles not coincident (VGSi Angle 3.00/TCH 73).

3.3 NM

1 NM

1.1

PURAE GPT 2.7

GPT 1.7

MAFEF GPT 0.6

MUDDA

CATEGORY	A	B	C	D	E
S-14	440/24	413 (500-½)	440/40	413 (500-¾)	
CIRCLING	520-1 492 (500-1)	640-1 612 (700-1)	820-2¼ 792 (800-2¼)	820-2½ 792 (800-2½)	820-2¾ 792 (800-2¾)

ELEV 28

TDZE 27

140° 5.4 NM from FAF

AS

81

4935 X 150

36

2022 X 150

TWR 171

AS

VOR Z or TACAN Z RWY 14