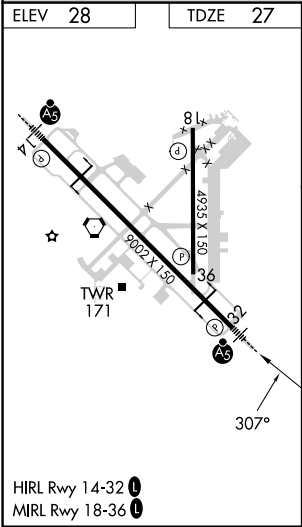
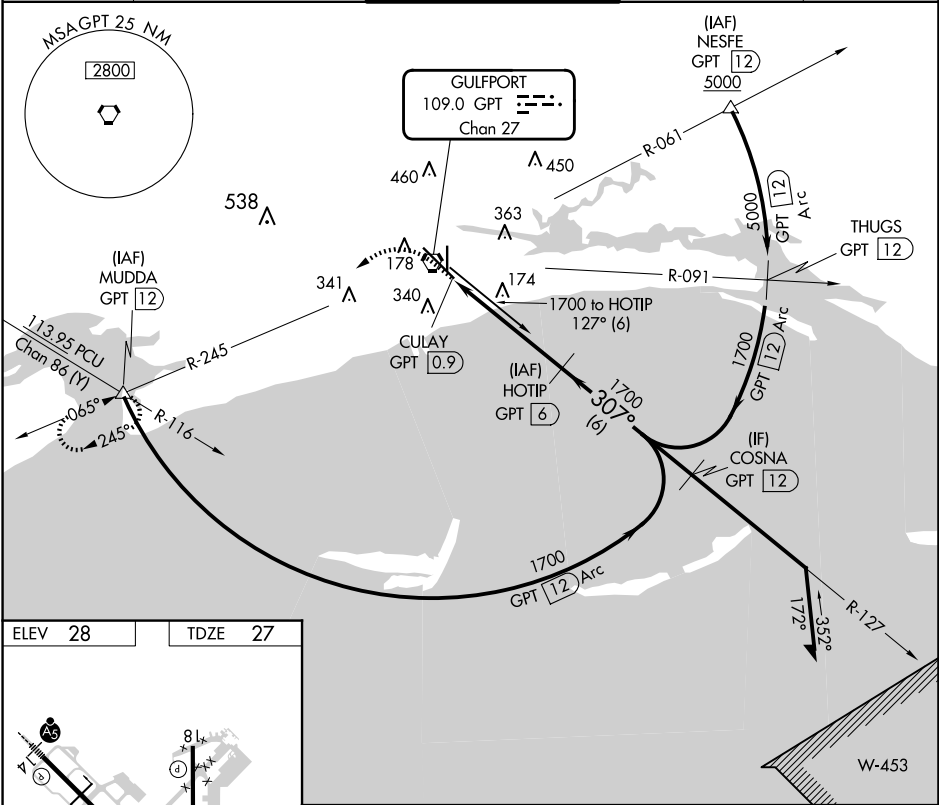


VORTAC GPT	APP CRS	Rwy Idg	9002
109.0	307°	TDZE	27
Chan 27		Apt Elev	28

VOR Z RWY 32
GULFPORT-BILOXI INTL (GPT)

DME required.	MALSR	MISSED APPROACH: Climb to 700 then climbing left turn to 2000 on GPT VORTAC R-245 to MUDDA INT/12 DME and hold.
<p>⚠ Rwy 32 helicopter visibility reduction below RVR 4000 NA. For inop ALS, increase S-32 Cat A/B visibility to RVR 5500, and Cat C/D/E to RVR 6000.</p>	<p>⚠</p>	

ATIS 119.45	GULFPORT APP CON * 127.5 254.25	GULFPORT TOWER * 123.7 (CTAF) 339.8	GND CON 120.4 348.6	UNICOM 122.95
----------------	------------------------------------	--	------------------------	------------------



700	2000	GPT R-245	MUDDA	HOTIP GPT 6	Remain within 15 NM
<p>127°</p> <p>307°</p> <p>1700</p> <p>1700</p> <p>3.04° TCH 47</p> <p>VGSI and descent angles not coincident (VGSI Angle 3.00/TCH 72).</p>					
CATEGORY	A	B	C	D	E
S-32	440/40 413 (500-¾)				
CIRCLING	520-1 492 (500-1)	640-1 612 (700-1)	760-2 732 (800-2)	760-2½ 732 (800-2½)	760-2½ 732 (800-2½)