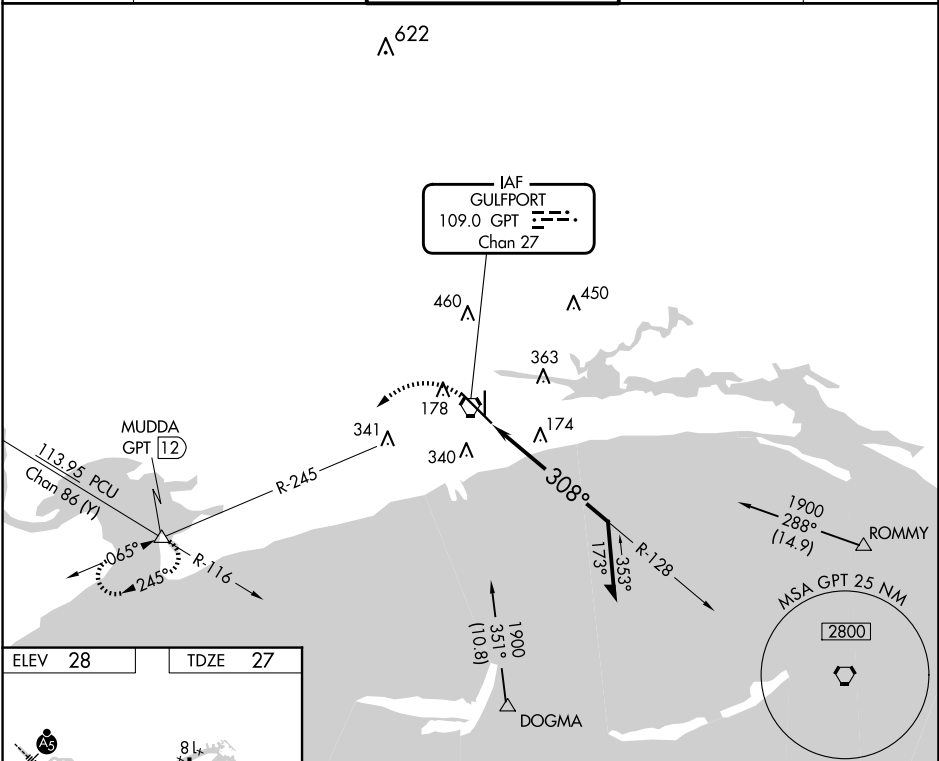


VORTAC GPT	APP CRS	Rwy Idg	9002
109.0	308°	TDZE	27
Chan 27		Apt Elev	28

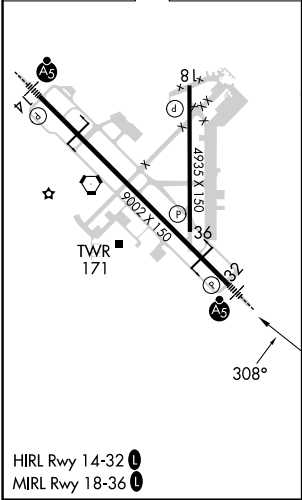
VOR Y RWY 32
GULFPORT-BILOXI INTL (GPT)

<p>T Rwy 32 helicopter visibility reduction below RVR 4000 NA. For inop ALS, increase S-32 Cat A/B visibility to RVR 5500.</p> <p>ASR</p>	<p>MALSR</p> <p>A5</p>	<p>MISSED APPROACH: Climbing left turn to 2000 on GPT VORTAC R-245 to MUDDA INT/12 DME and hold.</p>
---	--------------------------------------	--

ATIS 119.45	GULFPORT APP CON ★ 127.5 254.25	GULFPORT TOWER ★ 123.7 (CTAF) 0 339.8	GND CON 120.4 348.6	UNICOM 122.95
----------------	------------------------------------	--	------------------------	------------------



ELEV 28	TDZE 27
---------	---------



2000	GPT R-245	MUDDA	VGSI and descent angles not coincident (VGSI Angle 3.00/TCH 72).	
			GPT VORTAC	Remain within 10 NM
			GPT 2.2	128° 1900 308°
			1.2 NM	
CATEGORY	A	B	C	D
S-32	480/40 453 (500-¾)		480/45 453 (500-¾)	
CIRCLING	520-1 492 (500-1)	640-1 612 (700-1)	760-2 732 (800-2)	760-2¼ 732 (800-2¼)