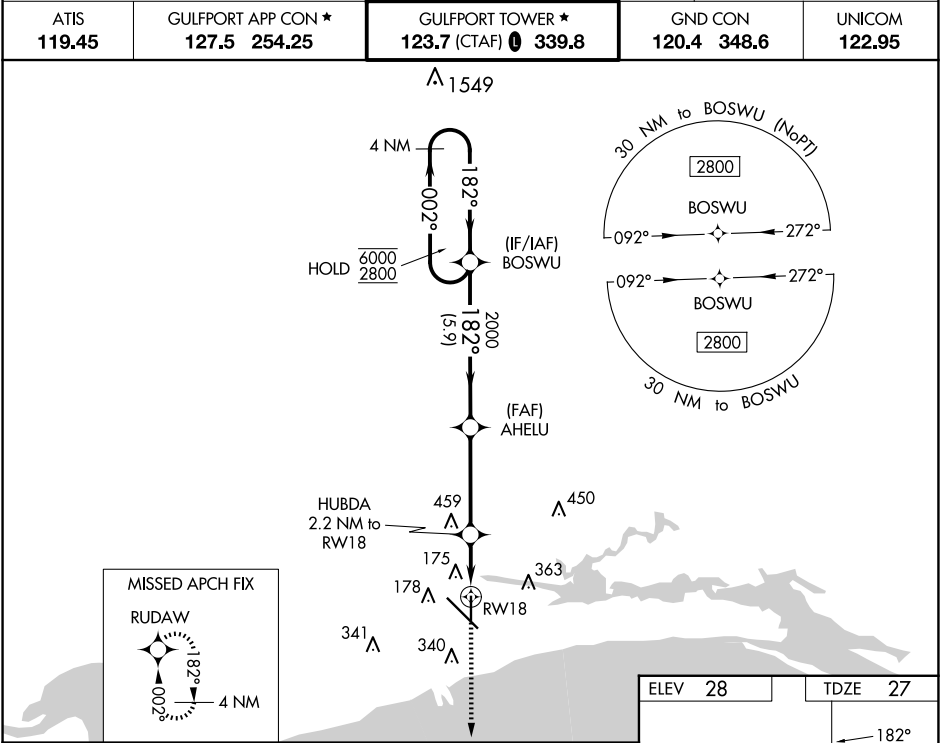


WAAS CH 69512 W18A	APP CRS 182°	Rwy Idg 4935 TDZE 27 Apt Elev 28
----------------------------------------	------------------------	-------------------------------------------------------------

RNAV (GPS) RWY 18
GULFPORT-BILOXI INTL (GPT)

RNP APCH - GPS.		MISSED APPROACH: Climb to 2000 direct RUDAW and hold.	
ATIS 119.45	GULFPORT APP CON ★ 127.5 254.25	GULFPORT TOWER ★ 123.7 (CTAF) 0 339.8	GND CON 120.4 348.6
		UNICOM 122.95	



4 NM Holding Pattern		BOSWU		2000		RUDAW	
<div>6000 ← 002° 2800 → 182°</div>		<div>182°</div>		<div>2000</div>		<div>1.2 NM to RW18</div>	
GP 3.00° TCH 50		<div>780</div>		<div>2000</div>		<div>2.2 NM to RW18</div>	
		<div>5.9 NM</div>		<div>3.8 NM</div>		<div>1.1 NM</div>	
CATEGORY		A		B		C	
LPV DA		227-3/4		200 (200-3/4)			
LNAV/ VNAV DA		442-1 1/8		415 (500-1 1/8)			
LNAV MDA		440-1 413 (500-1)		440-1 1/8 413 (500-1 1/8)			
CIRCLING		520-1 492 (500-1)		640-1 612 (700-1)		760-2 732 (800-2)	
						760-2 1/4 732 (800-2 1/4)	

