

LOC I-UXI 108.3	APP CRS 317°	Rwy Idg TDZE Apt Elev 9002 27 28
---------------------------	------------------------	--

ILS Z or LOC Z RWY 32
GULFPORT-BILOXI INTL (GPT')

DME or RADAR required, except DME required when control tower closed.

▼

⚠

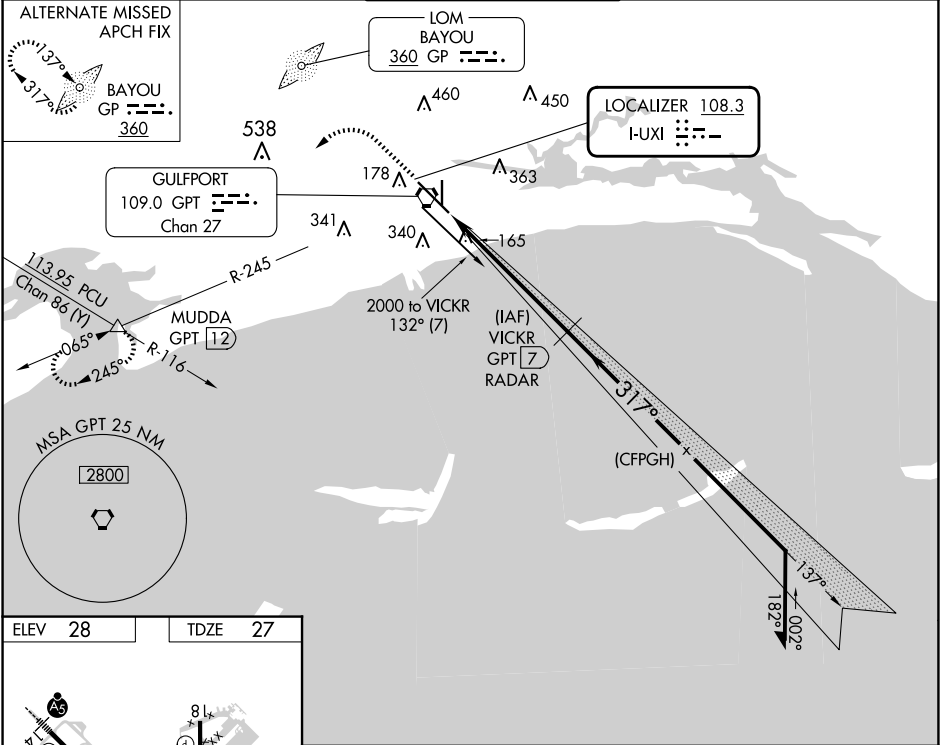
ASR

Rwy 32 helicopter visibility reduction below RVR 4000 NA. Inop table does not apply to S-ILS 32. DME from GPT VORTAC. Simultaneous reception of I-UXI and GPT DME required. For inop ALS, increase S-LOC 32 all Cats visibility to RVR 5500.

MALSR

MISSED APPROACH: Climb to 500 then climbing left turn to 2000 on GPT VORTAC R-245 to MUDDA INT/GPT 12 DME and hold.

ATIS 119.45	GULFPORT APP CON ★ 127.5 254.25	GULFPORT TOWER ★ 123.7 (CTAF) 0 339.8	GND CON 120.4 348.6	UNICOM 122.95
-----------------------	---	---	-------------------------------	-------------------------



ELEV 28 TDZE 27

HIRL Rwy 14-32

MRL Rwy 18-36

FAF to MAP 6 NM

Knots	60	90	120	150	180
Min:Sec	6:00	4:00	3:00	2:24	2:00

500

2000

GPT R-245

MUDDA

VICKR GPT 7 RADAR

VGSI and ILS glidepath not coincident (VGSI Angle 3.00/TCH 72).

GS unusable when control tower closed. Only localizer minimums authorized during this period.

0.9 NM

5.1 NM

CATEGORY	A	B	C	D	E
S-ILS 32		277/40	250 (300-¾)		
S-LOC 32		380/40	353 (400-¾)		
CIRCLING	520-1 492 (500-1)	640-1 612 (700-1)	760-2 732 (800-2)	760-2¼ 732 (800-2¼)	760-2½ 732 (800-2½)

SC-4, 07 AUG 2025 to 04 SEP 2025

SC-4, 07 AUG 2025 to 04 SEP 2025