

ILS Z or LOC Z RWY 14
GULFPORT-BILOXI INTL (GPT)

MISSED APPROACH: Climb to 500 then climbing right turn to 2000 on GPT VORTAC R-245 to MUDDA INT/12 DME and hold.

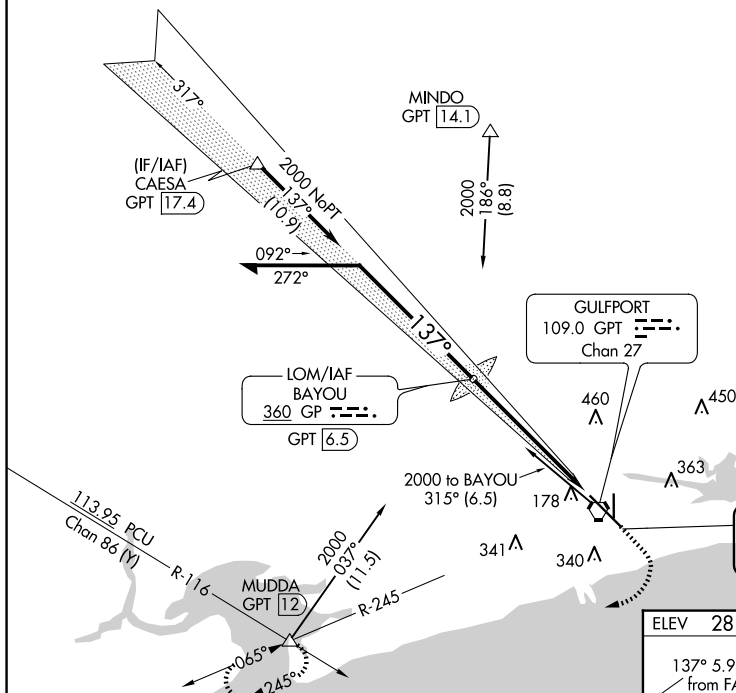
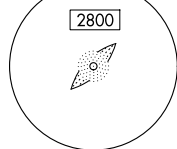
Procedure NA for arrivals at CAESA on V552 westbound.

1549

ALTERNATE MISSED
APCH FIX



MSA GP 25 NM



500 ↑	2000 ↗ GPT R-245	MUDDA △
----------	---------------------------	----------------

* LOC only.

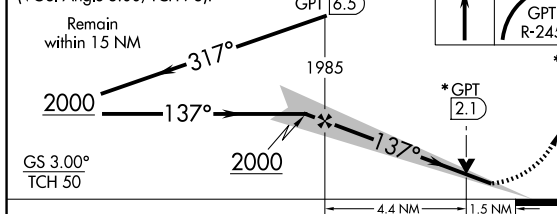


Diagram illustrating the FAF to MAP 5.9 NM segment of the instrument approach for Runway 14-32.

Key features and distances shown:

- 137° 5.9 NM from FAF
- 9002 X 150
- 4935 X 150
- 36
- 32
- TWR 171
- HIRL Rwy 14-32
- MIRL Rwy 18-36

FAF to MAP 5.9 NM					
Knots	60	90	120	150	180
Min:Sec	5:54	3:56	2:57	2:22	1:58