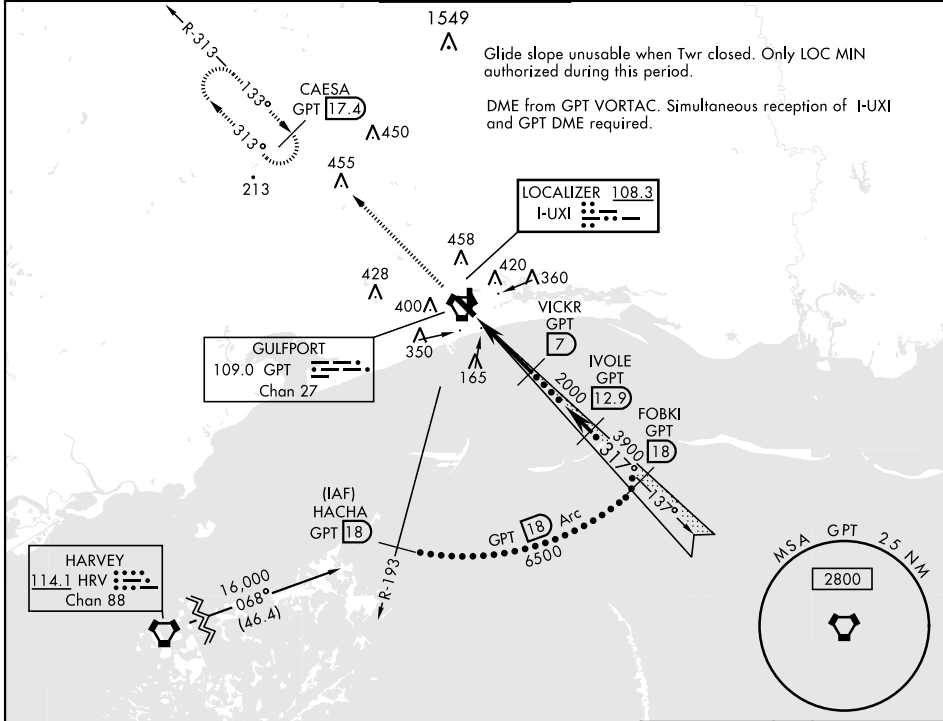


HI-ILS Y or LOC Y RWY 32

LOC I-UXI <u>108.3</u>	APCH CRS 317°	Rwy Idg 9002 TDZE 27 Arprt Elev 28	AL-576 [USAF]	GULFPORT-BILOXI INTL (KGPT)		
RADAR or DME required. ▼ * When ALS inop increase CAT E RVR 40, RVR 18 authorized with use of FD or AP or HUD to DA. ▲ ** When ALS inop increase RVR 55.			MALSR A5	MISSED APPROACH: Climb to 2000 on GPT VORTAC R-313 to CAESA/GPT 17.4 DME and hold.		
ATIS ★ 119.45	GULFPORT APP CON 124.6 354.1 130°-309° 127.5 254.25 310°-129°		GULFPORT TOWER ★ 123.7 CTAF 0 339.8	GND CON 120.4 348.6	UNICOM 122.95	ASR



EMERG SAFE ALT 100 NM 3100

2000

GPT

R-313

CAESA

GPT

17.4

VGSI and descent angles not coincident
(VGSI Angle 3.00/TCH 72).

VORTAC

LOC MAP

1

VICKR

7

2000

IVOLE

12.9

3900

FOBK I

18

6500

HACHA

18

16,000

317°

3900

6500

18 Arc

GS 3.00°

TCH 55

2000

6 NM

CATEGORY	C	D	E
S-ILS 32 *	228/24	200	(200-½)
S-LOC 32 **	380/30	352	(400-¾)
CIRCLING	820-2¼ 791 (800-2¼)	820-2½ 791 (800-2½)	820-2¾ 791 (800-2¾)

ELEV 28

TDZE 27

81

4935 x 150

36

110

±109

317° 6 NM from FAF

☆

118

TWR

317° 6 NM from FAF

HIRL Rwy 14-32

MRL Rwy 18-36

HI-ILS Y or LOC Y RWY 32