

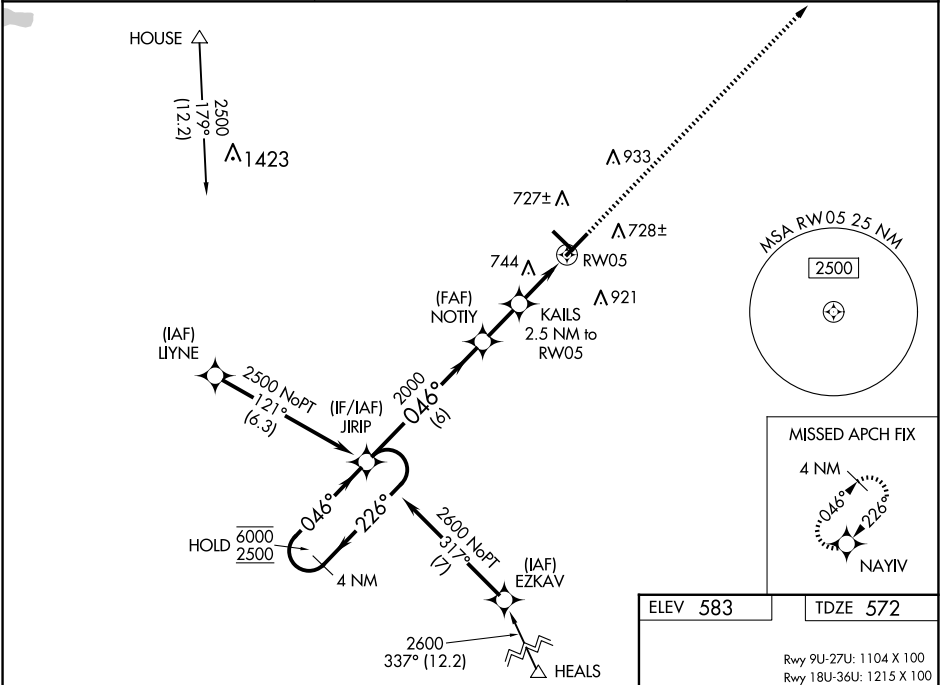
WAAS CH 5370A W05A	APP CRS 046°	Rwy Idg TDZE 572 Apt Elev 583	6001
--	------------------------	---	-------------

RNAV (GPS) RWY 5

FREEMAN MUNI (SE.R)

RNP APCH - GPS.	ODALS	MISSED APPROACH: Climb to 2400 direct NAYIV and hold.
<div><div>▼</div><div>NA</div><div>Rwy 5 helicopter visibility reduction below ¾ SM NA. Inop table does not apply to LPV all Cats and LNAV Cats A/B. For uncompensated Baro-VNAV systems, LNAV/VNAV NA below -16°C or above 54°C. For inop ALS, increase LNAV/VNAV Cats C/D visibility to 1½ SM.</div></div>	<div><div>⊕</div><div>⋮</div></div>	

AWOS-3 119.425	LOUISVILLE APP CON 132.075 327.0	UNICOM 122.8 (CTAF)
--------------------------	--	-------------------------------



4 NM Holding Pattern				
VGSI and RNAV glidepath not coincident (VGSI Angle 3.00/TCH 33).				
GP 3.00° TCH 45				
CATEGORY	A	B	C	D
LPV DA	834-1		262 (300-1)	
LNAV/VNAV DA	1017-1½		445 (500-1½)	
LNAV MDA	1000-1	428 (500-1)	1000-1½	428 (500-1½)
CIRCLING	1080-1 497 (500-1)	1140-1 557 (600-1)	1240-1¾ 657 (700-1¾)	1240-2 657 (700-2)

