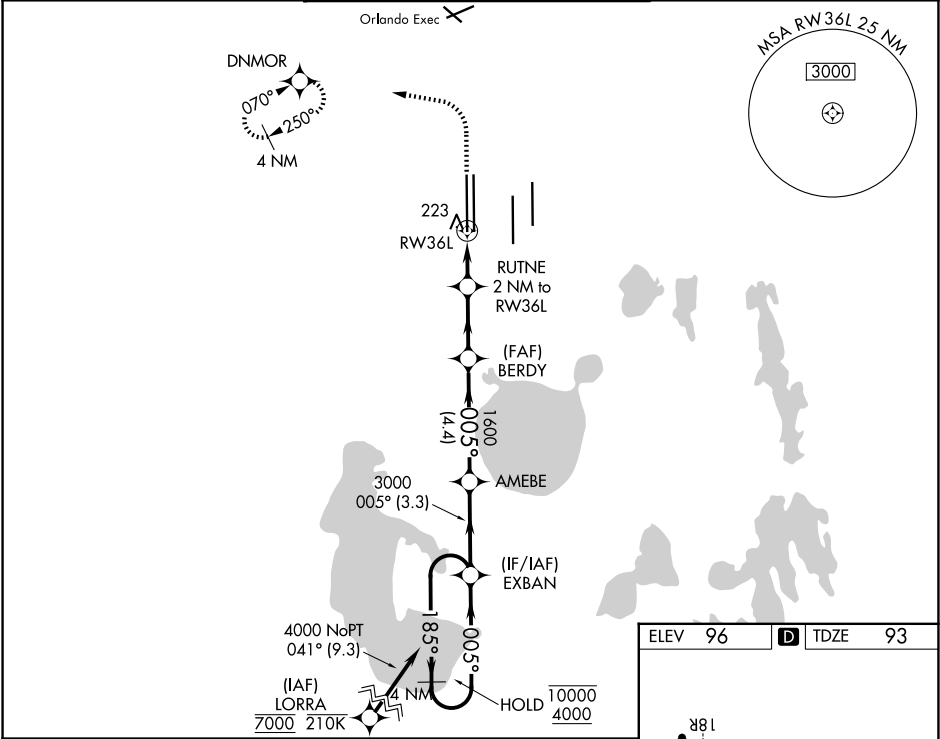


WAAS CH 82313 W36B	APP CRS 005°	Rwy Ldg 11621 TDZE 93 Apt Elev 96
----------------------------------------	------------------------	--------------------------------------------------------------

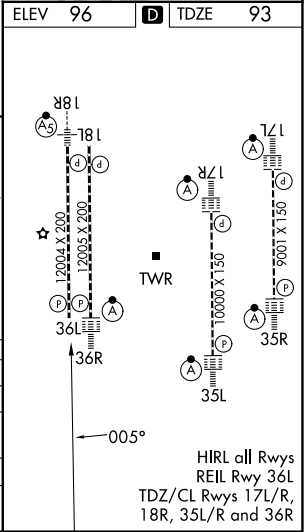
RNAV (GPS) RWY 36L

ORLANDO INTL (MCO)

RNP APCH.			MISSED APPROACH: Climb to 500 then climbing left turn to 3000 direct DNMOR and hold, continue climb-in-hold to 3000.		
Simultaneous approach authorized. LNAV procedure NA during simultaneous operations. Use of FD or AP required during simultaneous operations. For uncompensated Baro-VNAV systems, LNAV/VNAV NA below 1°C or above 54°C.					
D-ATIS ARR 121.25 DEP 120.525	ORLANDO APP CON 124.8 307.0	ORLANDO TOWER 118.45 253.5 (17L-35R, 17R-35L) 124.3 253.5 (18L-36R, 18R-36L)	GND CON 126.4 (E) 121.8 (W)	CLNC DEL 134.7 341.7	CPDLC



500	3000	DNMOR	VGSi and RNAV glidepath not coincident (VGSi Angle 3.00°/TCH 69°).				4 NM
			BERDY	AMEBE	EXBAN	Holding Pattern	
			RUTNE 2 NM to RW36L	1600	185° → 10000 ← 005° 4000	GP 3.00° TCH 55	
			1 NM to RW36L	780	3000		
			1 NM	1 NM	2.6 NM	4.4 NM	3.3 NM
CATEGORY	A	B	C	D			
LPV DA	293/40		200 (200-¾)				
LNAV/VNAV DA	406/45		313 (400-⅔)				
LNAV MDA	480/55	387 (400-1)	480/60	387 (400-1¼)			
CIRCLING	740-1	644 (700-1)	740-1¾ 644 (700-1¾)	740-2 644 (700-2)			



SE-3, 07 AUG 2025 to 04 SEP 2025

SE-3, 07 AUG 2025 to 04 SEP 2025