

|  |                        |  |
|--|------------------------|--|
| WAAS<br>CH <b>45813</b><br><b>W35B</b> | APP CRS<br><b>005°</b> | Rwy Ldg <b>10000</b><br>TDZE <b>88</b><br>Apt Elev <b>96</b> |
|--|------------------------|--|

RNAV (GPS) RWY 35L

ORLANDO INTL (MCO)

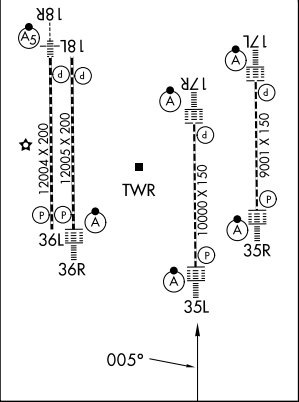
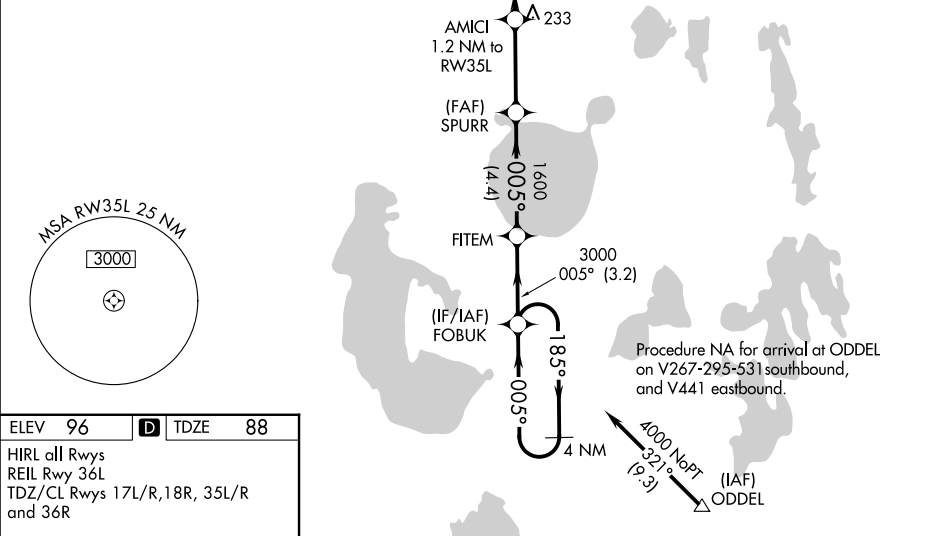
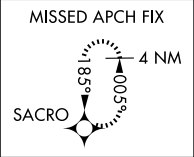
RNP APCH - GPS.

For uncompensated Baro-VNAV systems, LNAV/VNAV NA below -1°C or above 54°C. Bright lights on highway midway between Rwy 35L and Rwy 35R may be mistaken for runway lights. Simultaneous approach authorized with Rwy 35R, Rwy 36L, or Rwy 35R and Rwy 36R. LNAV procedure NA during simultaneous operations. Use of FD or AP required during simultaneous operations. For inop ALS, increase LNAV/VNAV all Cats visibility to RVR 5100 and LNAV Cats C/D visibility to RVR 6000.



MISSED APPROACH:  
Climb to 4000 direct  
SACRO and hold.

|   |                                       |  |   |  |       |
|---|---------------------------------------|--|---|--|-------|
| D-ATIS<br>ARR <b>121.25</b><br>DEP <b>120.525</b> | ORLANDO APP CON<br><b>124.8 307.0</b> | ORLANDO TOWER<br><b>118.45 253.5</b><br><b>124.3 253.5</b><br>(17L-35R, 17R-35L)<br>(18L-36R, 18R-36L) | GND CON<br><b>126.4</b> (E)<br><b>121.8</b> (W) | CLNC DEL<br><b>134.7</b><br><b>341.7</b> | CPDLC |
|---|---------------------------------------|--|---|--|-------|



|                  |        |   |                        |                         |
|------------------|--------|---|------------------------|-------------------------|
| 4000             | SACRO  | VGSI and RNAV glidepath not coincident<br>(VGSI Angle 3.00/TCH 72). |                        | 4 NM<br>Holding Pattern |
|                  |        | AMCI<br>1.2 NM to<br>RW35L  | SPURR<br>1600          | FOBUK                   |
|                  |        | 540   | 1600                   | GP 3.00°<br>TCH 57      |
| 1.2 NM           |        | 3.3 NM  | 4.4 NM                 | 3.2 NM                  |
| CATEGORY         | A      | B   | C                      | D                       |
| LPV DA           | 288/18 |   | 200 (200-½)            |                         |
| LNAV/<br>VNAV DA | 407/27 |   | 319 (400-¾)            |                         |
| LNAV MDA         | 500/24 | 412 (500-½)   | 500/40                 | 412 (500-¾)             |
| CIRCLING         | 740-1  | 644 (700-1)   | 740-1¾<br>644 (700-1¾) | 740-2<br>644 (700-2)    |