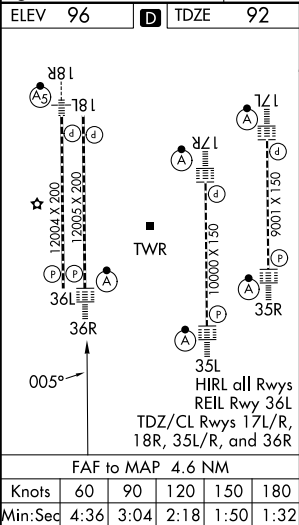
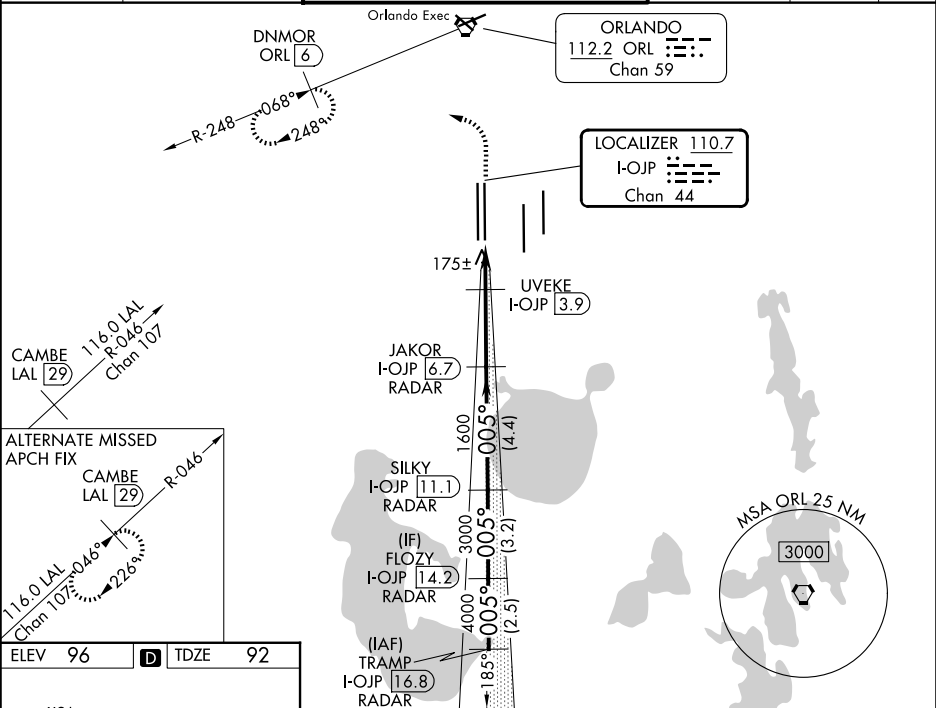


LOC/DME I-OJP	APP CRS	Rwy Ldg
<b>110.7</b>	<b>005°</b>	<b>11601</b>
Chan <b>44</b>		<b>92</b>
		<b>96</b>

ILS or LOC RWY 36R

ORLANDO INTL (MCO)

RADAR required for procedure entry. DME or RADAR required.			ALSF-2	MISSED APPROACH: Climb to 500 then climbing left turn to 3000 on heading 309° and ORL VORTAC R-248 to DNMOR/ORL 6 DME and hold, continue climb-in-hold to 3000.		
Simultaneous approach authorized.						
D-ATIS	ORLANDO APP CON	ORLANDO TOWER		GND CON	CLNC DEL	CPDLC
ARR <b>121.25</b>	<b>124.8 307.0</b>	<b>118.45 253.5</b>		<b>126.4 (E)</b>	<b>134.7</b>	
DEP <b>120.525</b>		<b>124.3 253.5</b>		<b>121.8 (W)</b>	<b>341.7</b>	
		(17L-35R, 17R-35L)				
		(18L-36R, 18R-36L)				



500	3000	hdg 309° ORL R-248	DNMOR ORL 6	VGSI and ILS glidepath not coincident (VGSI Angle 3.00°/TCH 70).		FLOZY I-OJP 14.2 RADAR	TRAMP I-OJP 16.8 RADAR
				JAKOR I-OJP 6.7 RADAR	SILKY I-OJP 11.1 RADAR	005° 5000	
				UVEKE I-OJP 3.9	1600	3000	4000
				I-OJP 2.1	540	1600	GS 3.00° TCH 56
				I-OJP 3	0.9 NM	0.9 NM	2.8 NM
					4.4 NM	3.2 NM	2.5 NM
CATEGORY		A		B		C	
S-ILS 36R				292/18		200 (200-½)	
S-LOC 36R		540/24 448 (500-½)		540/45 448 (500-¾)			
CIRCLING		740-1 644 (700-1)		740-1¾ 644 (700-1¾)		740-2 644 (700-2)	
		UVEKE FIX MINIMUMS (DME REQUIRED)					
S-LOC 36R		440/24 348 (400-½)		440/30 348 (400-¾)			
CIRCLING		740-1 644 (700-1)		740-1¾ 644 (700-1¾)		740-2 644 (700-2)	