

ILS or LOC RWY 35L
ORLANDO INTL (MCO)

MISSED APPROACH: Climb to 3000 on heading 005° and ORL VORTAC R-049 to OVIDO INT/ORL 13 DME and hold.

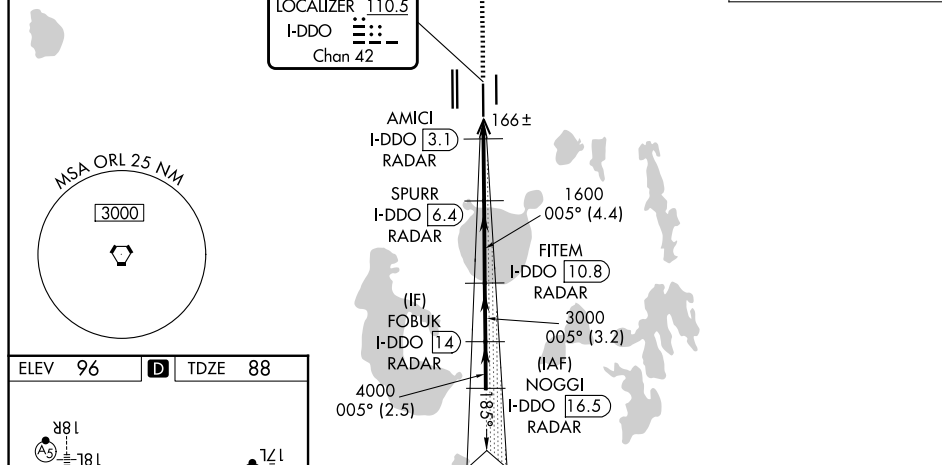


Figure 1: Example of a typical enroute chart. The left side shows a vertical profile of the HIRL all Rwy 36L, TDZ/CL Rwy 17L/R, 18R, 35L/R, and 36R. The right side shows a plan view of the enroute chart with various navigation aids, frequencies, and distances. The plan view includes a heading of 005°, a distance of 4.6 NM from FAF to MAP, and various navigation aids like OVIDO, VGS and ILS glidepath not coincident, and NOGGI. The plan view also shows various frequencies and distances between waypoints.

SE-3, 07 AUG 2025 to 04 SEP 2025