

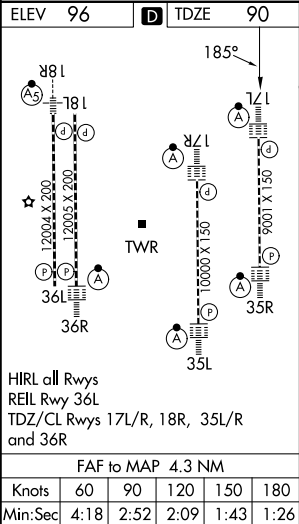
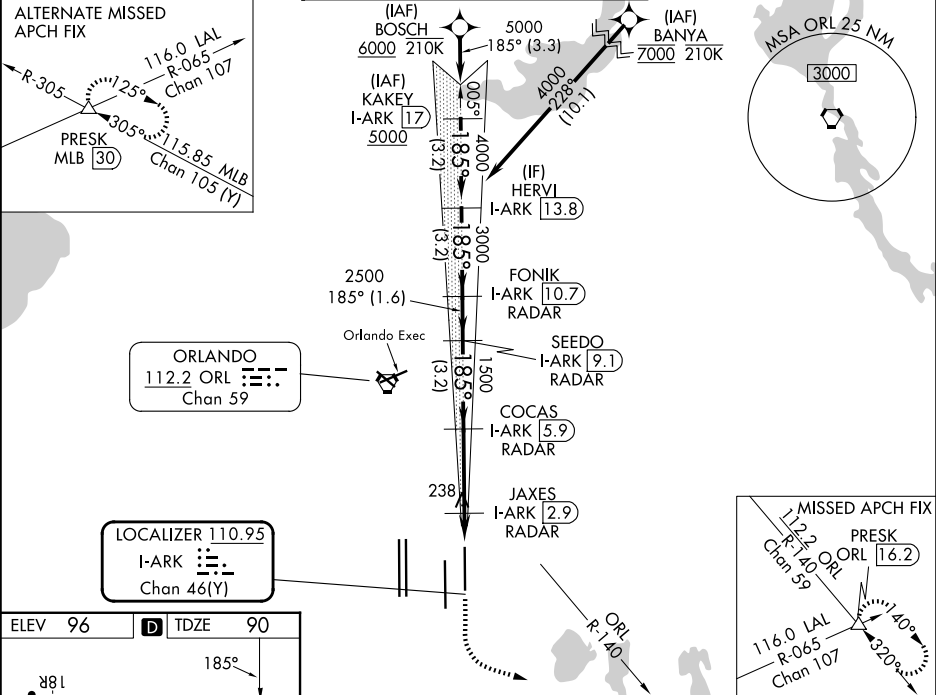
LOC/DME I-ARK <b>110.95</b> Chan <b>46(Y)</b>	APP CRS <b>185°</b>	Rwy Ldg TDZE Apt Elev	<b>9001</b> <b>90</b> <b>96</b>
---	------------------------	-----------------------------	---------------------------------------

ILS or LOC RWY 17L

ORLANDO INTL (MCO)

RNAV 1-DME/DME/IRU or GPS or RADAR required for procedure entry. DME or RADAR required.	ALSF-2	MISSED APPROACH: Climb to 500 then climbing left turn to 3000 on heading 100° and ORL VORTAC R-140 to PRESK INT/ORL 16.2 DME and hold, continue climb-in-hold to 3000.
▼ Bright lights on highway midway between Rwy 17L and Rwy 17R may be mistaken for runway lights. Simultaneous approach authorized. For inop ALS, increase S-LOC 17L Cats C/D visibility to RVR 6000.		

D-ATIS ARR <b>121.25</b> DEP <b>120.525</b>	ORLANDO APP CON <b>124.8 307.0</b>	ORLANDO TOWER <b>118.45 253.5</b> <b>124.3 253.5</b> (17L-35R, 17R-35L) (18L-36R, 18R-36L)	GND CON <b>126.4 (E)</b> <b>121.8 (W)</b>	CLNC DEL <b>134.7</b> <b>341.7</b>	CPDLC
---	---------------------------------------	--	---	--	-------



	BOSCH	KAKEY	HERVI	FONIK	SEEDO	COCAS	JAXES	PRESK
	I-ARK	I-ARK	I-ARK	I-ARK	I-ARK	I-ARK	I-ARK	I-ARK
	17	17	13.8	10.7	9.1	5.9	2.9	1.7
	6000	5000	4000	3000	2500	1500	540	
	GS 3.00°							
	TCH 55							
	3.3	3.2	3.2	1.6	3.2	3	1.3	
CATEGORY	A	B	C	D				
S-ILS 17L	290/18	200 (200-½)						
S-LOC 17L	500/24	410 (500-½)	500/40	410 (500-¾)				
CIRCLING	740-1	644 (700-1)	740-1¾	740-2				
			644 (700-1¾)	644 (700-2)				