


ILS RWY 35R (CAT II & III)
ORLANDO INTL (MCO)

ALSF-2

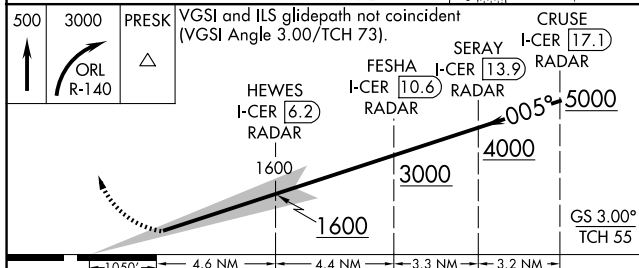
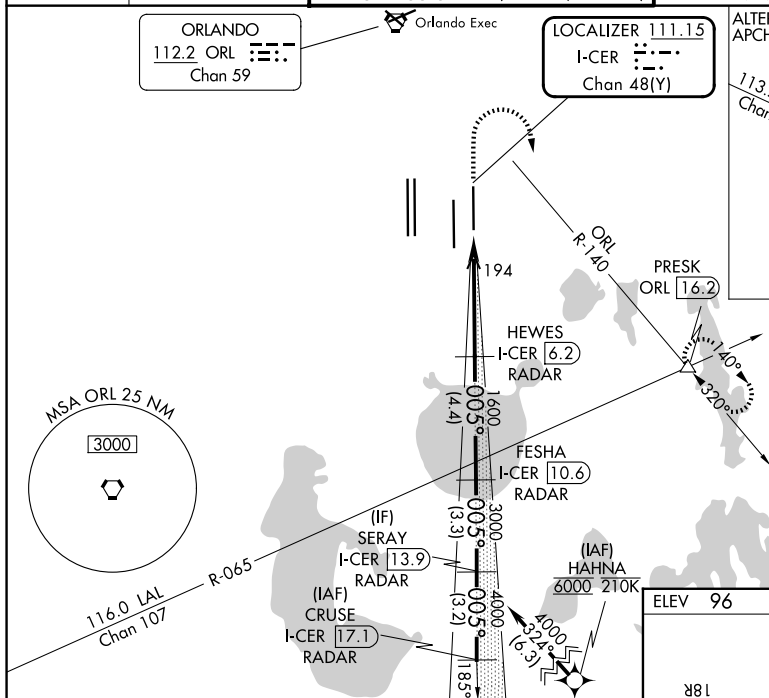
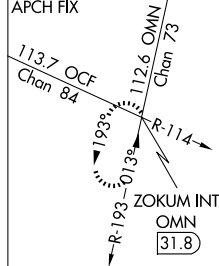
MISSED APPROACH: Climb to 500 then climbing right turn to 3000 on ORL VORTAC R-140 to PRESK INT/ ORL 16.2 DME and hold, continue climb-in-hold to 3000.

ORLANDO
112.2 ORL 
Chan 59

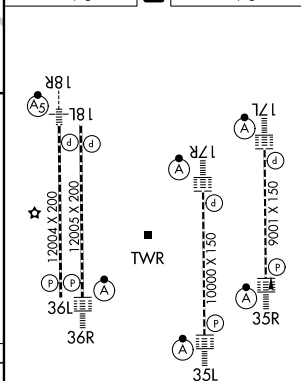
 Orlando Exec

LOCALIZER 111.15
I-CER $\frac{\cdot}{\cdot} \cdot - \cdot$
Chan 48(Y)

ALTERNATE MISSED



ELEV 96	D	TDZE 90
---------	----------	---------



HIRL all Rwy's
REIL Rwy 36L
TDZ/CL Rwy's 17L/R, 18R,
35L/R and 36R

CATEGORY II & III ILS - SPECIAL AIRCREW
& AIRCRAFT CERTIFICATION REQUIRED