

LOC/DME I-ARK <b><u>110.95</u></b> Chgn <b>46</b> (Y)	APP CRS <b>185°</b>	Rwy Ldg <b>9001</b> TDZE <b>90</b> Apt Elev <b>96</b>
---	------------------------	---

ILS RWY 17L (SA CAT I)  
ORLANDO INTL (MCO)

RNAV 1-DME/DME/IRU or GPS or RADAR required for procedure entry.  
DME or RADAR required.

**T** Bright lights on highway midway between Rwy 17L and Rwy 17R may be mistaken for runway lights. Simultaneous approach authorized. Requires specific OPSPEC, MSPEC, or LOA approval.

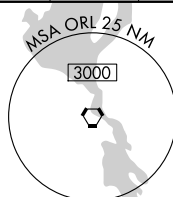
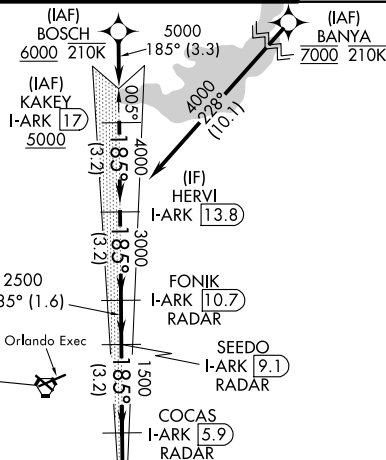
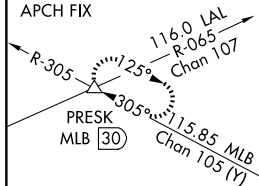
ALSF-2



**MISSED APPROACH:** Climb to 500 then climbing left turn to 3000 on heading 100° and ORL VORTAC R-140 to PRESK INT/ORL 16.2 DME and hold, continue climb-in-hold to 3000.

D-ATIS		ORLANDO APP CON		ORLANDO TOWER		GND CON	CLNC DEL	CPDLC
ARR	<b>121.25</b>			<b>118.45</b>	<b>253.5</b>	<b>126.4</b> (E)	<b>134.7</b>	
DEP	<b>120.525</b>	<b>124.8</b>	<b>307.0</b>	<b>124.3</b>	<b>253.5</b>	<b>121.8</b> (W)	<b>341.7</b>	

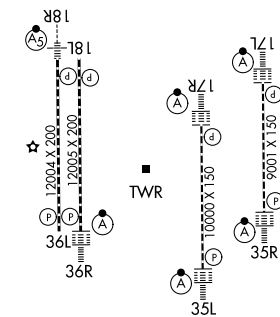
ALTERNATE MISSED  
APCH FIX



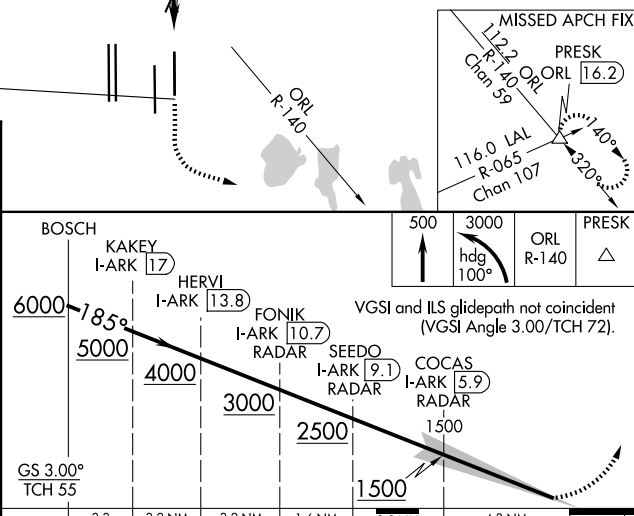
ORLANDO  
2.2 ORL :==:  
Chan 59

LOCALIZER 110.95  
I-ARK  
Chan 46(Y)

ELEV	96	<b>D</b>	TDZE	90
------	----	----------	------	----



HIRL all Rwy's  
REIL Rwy 36L  
TDZ/CL Rwy's 17L/R, 18R, 35L/R  
and 36R



	3.3	3.2 NM	3.2 NM	1.6 NM	3.2 NM	4.3 NM	1040
CATEGORY	A		B		C		D
S-ILS 17L	RA 145/14 150 DA 240						

SA CATEGORY I ILS - SPECIAL AIRCREW  
& AIRCRAFT CERTIFICATION REQUIRED