

WAAS  
CH **45527**  
**W28A**

APP CRS  
**281°**

Rwy Ldg  
TDZE  
Apt Elev  
**19708**  
**1134**  
**1203**

**RNAV (GPS) Y RWY 28C**

PITTSBURGH INTL (PIT')

RNP APCH - GPS

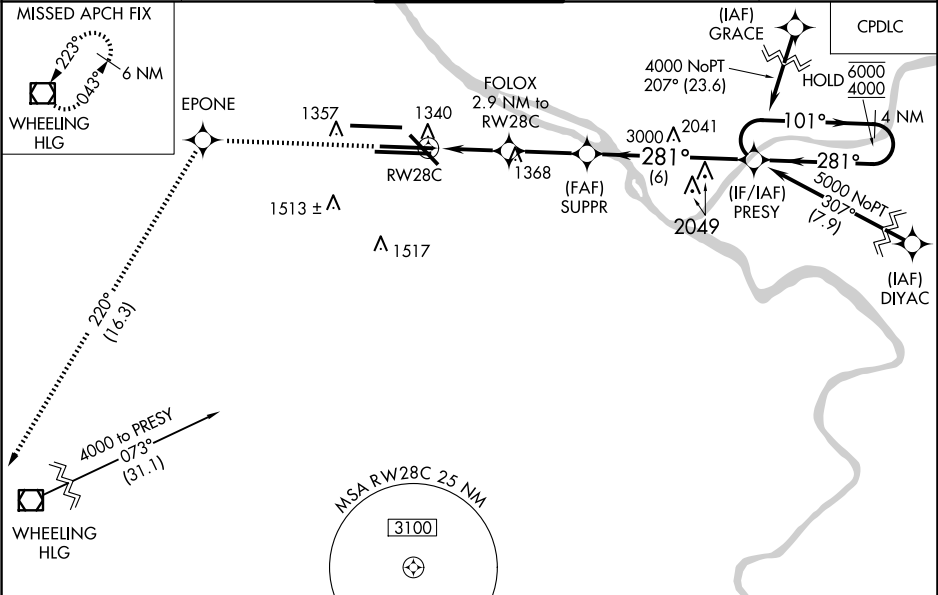
⚠

Circling Rwy 14 NA at night. Rwy 28C helicopter visibility reduction below RVR 4000 NA.  
For uncompensated Baro-VNAV systems, LNAV/VNAV NA below -18°C or above 54°C.  
Simultaneous approach authorized. LNAV procedure NA during simultaneous operations.  
Use of FD or AP required during simultaneous operations.

MISSED APPROACH:

Climb to 4000 direct EPONE and on track 220° to HLG  
VOR/DME and hold.

D-ATIS ARR <b>127.25</b> DEP <b>135.9</b>	PITTSBURGH APP CON <b>123.95 360.8</b>	PITTSBURGH TOWER <b>128.3 291.7</b>	GND CON SOUTH <b>121.9 348.6</b> NORTH <b>127.8 348.6</b>	CLNC DEL <b>126.75 353.7</b>
---	---	--	---	---------------------------------



ELEV **1203** **D** TDZE **1134**

REIL Rwy 10C  
HIRL all Rwy's  
TDZ/CL Rwy's 10L, 10R, 28L, 28R,  
28C, and 32

3100

MSA RW28C 25 NM

4000

EPONE

HLG

tr 220°

VGSI and RNAV glidepath not coincident  
(VGSI Angle 3.00/TCH 43).

4 NM

Holding Pattern

FOLOX

2.9 NM to RW28C

1.3 NM to RW28C

2100

3000

281°

101°

6000

4000

GP 3.00°

TCH 50

CATEGORY	A	B	C	D
LPV DA	1384/40	250 (200-¾)		
LNAV/VNAV DA	1544/60	410 (400-1¼)		
LNAV MDA	1600/55	466 (400-1)	1600-1¾	466 (400-1¾)
<input checked="" type="checkbox"/> CIRCLING	1700-1	497 (500-1)	1880-2 677 (700-2)	1880-2¼ 677 (700-2¼)