

PITTSBURGH, PENNSYLVANIA

AL-570 (FAA)

25163

RNAV (GPS) Y RWY 10R  
PITTSBURGH INTL (PIT)

WAAS CH <b>86226</b> <b>W10D</b>	APP CRS <b>101°</b>	Rwy Ldg <b>1149Z</b> TDZE <b>1135</b> Apt Elev <b>1203</b>
--	------------------------	--

RNP APCH - GPS.

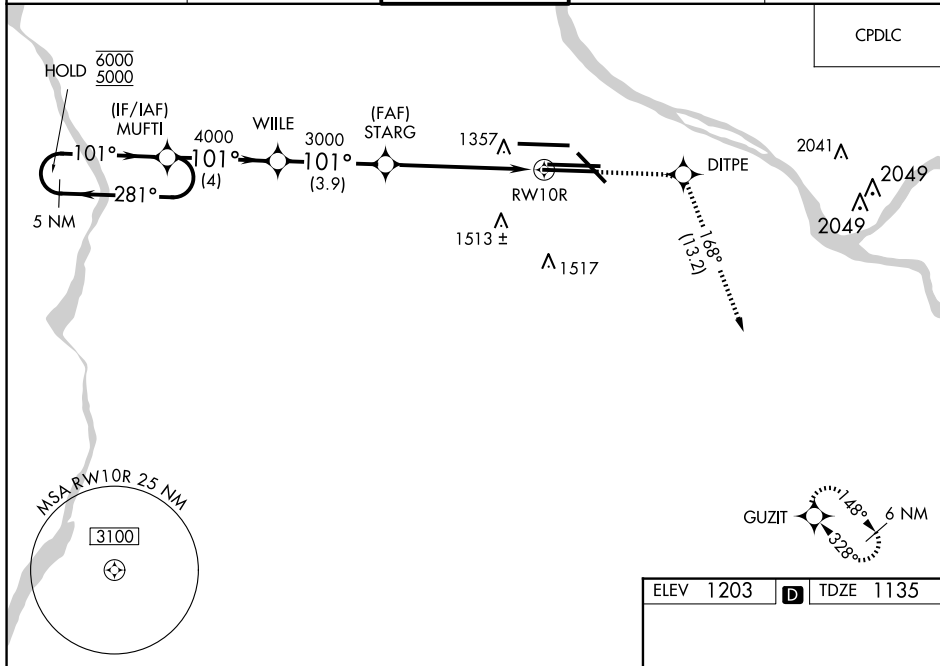
**T** For uncompensated Baro-VNAV systems, LNAV/VNAV NA below -17°C or above 54°C. Simultaneous approach authorized. LNAV procedure NA during simultaneous operations. Use of FD or AP required during simultaneous operations.

ALSF-2



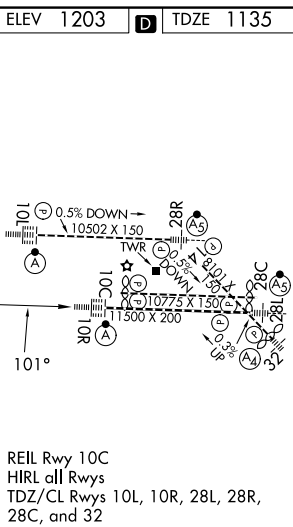
**MISSED APPROACH:** Climb to 4000 direct DITPE and right turn on track 168° to GUZIT and hold.

D-ATIS	PITTSBURGH APP CON	PITTSBURGH TOWER	GND CON	CLNC DEL
ARR <b>127.25</b>	<b>123.95 360.8</b>	<b>128.3 291.7</b>	SOUTH <b>121.9 348.6</b>	
DEP <b>135.9</b>			NORTH <b>127.8 348.6</b>	<b>126.75 353.7</b>



NE-4, 07 AUG 2025 to 04 SEP 2025

<p>5 NM Holding Pattern</p> <p>VGSI and RNAV glidepath not coincident (VGSI Angle 3.00/TCH 71).</p>				
<p>CATEGORY</p> <p>LPV DA</p> <p>LN/V DA</p> <p>LN/V MDA</p> <p><b>C</b> CIRCLING</p>				
<p>A</p> <p>B</p> <p>C</p> <p>D</p>				
<p>1335/18</p> <p>200 (200-½)</p> <p>1658/55</p> <p>523 (500-1)</p> <p>1660/24 525 (500-½)</p> <p>1660/55 525 (500-1)</p> <p>1700-1 497 (500-1)</p>				
<p>1880-2 677 (700-2)</p> <p>1880-2¼ 677 (700-2¼)</p>				



PITTSBURGH, PENNSYLVANIA  
Amdt 4 26DEC24

40°29'N-80°14'W

PITTSBURGH INTL (PIT)  
RNAV (GPS) Y RWY 10R