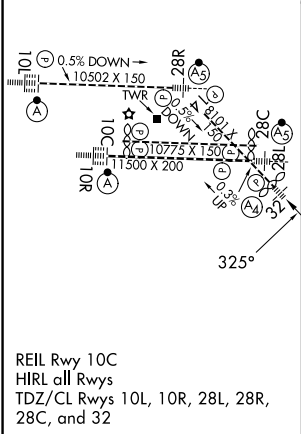
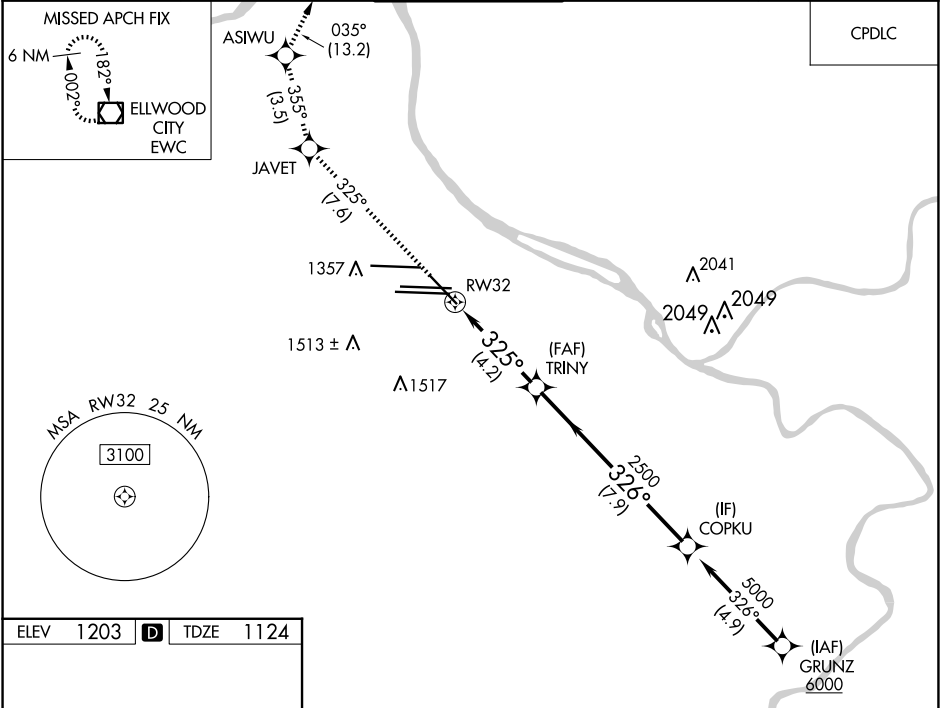




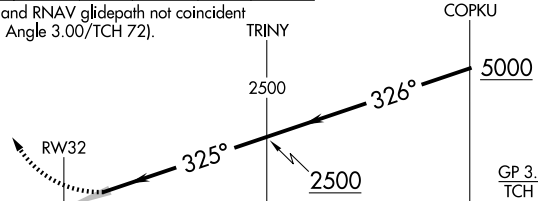


APP CRS	Rwy Ldg	7466
325°	TDZE	1124
	Apt Elev	1203

RNAV (RNP) Z RWY 32
PITTSBURGH INTL (PIT)

RNP AR APCH - GPS.		MALS	MISSED APPROACH: Climb to 4000 on track 325° to JAVET and track 355° to ASIWU and track 035° to EWC VOR/DME and hold.	
For uncompensated Baro-VNAV systems, procedure NA below -18°C (0°F) or above 54°C (130°F).				
D-ATIS ARR 127.25 DEP 135.9	PITTSBURGH APP CON 123.95 360.8	PITTSBURGH TOWER 128.3 291.7	GND CON SOUTH 121.9 348.6 NORTH 127.8 348.6	CLNC DEL 126.75 353.7



4000	JAVET	tr 355°	ASIWU	tr 035°	EWC
tr 325°					
VGSI and RNAV glidepath not coincident (VGSI Angle 3.00/TCH 72).					
					
CATEGORY	A		B	C	D
RNP 0.30 DA	1503/40 379 (300-¾)				
AUTHORIZATION REQUIRED					

NE-4, 07 AUG 2025 to 04 SEP 2025

NE-4, 07 AUG 2025 to 04 SEP 2025