

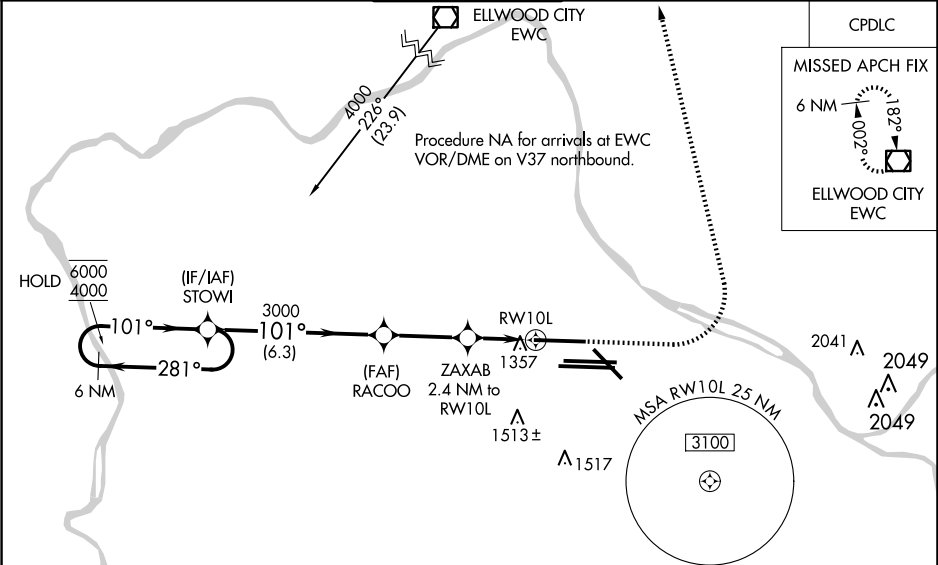
WAAS CH 81826 W10B	APP CRS 101°	Rwy Ldg TDZE Apt Elev	10502 1203 1203
--	------------------------	-----------------------------	--

RNAV (GPS) RWY 10L

PITTSBURGH INTL (PIT)

RNP APCH - GPS.	ALSIF-2	MISSED APPROACH: Climb to 1900 then climbing left turn to 4000 direct EWC VOR/DME and hold.
Simultaneous approach authorized. For uncompensated Baro-VNAV systems, LNAV/VNAV NA below -17°C or above 54°C. LNAV procedure NA during simultaneous operations. Use of FD or AP required during simultaneous operations. For inop ALS, increase LNAV Cats C/D visibility to RVR 6000.		

D-ATIS ARR 127.25 DEP 135.9	PITTSBURGH APP CON 123.95 360.8	PITTSBURGH TOWER 128.3 291.7	GND CON SOUTH 121.9 348.6 NORTH 121.8 348.6	CLNC DEL 126.75 353.7
---	---	--	---	---------------------------------



ELEV 1203		TDZE 1203	
VGSI and RNAV glidepath not coincident (VGSI Angle 3.00/TCH 83).			
6 NM Holding Pattern			
STOWI			
GP 3.00° TCH 59			
RACOO 3000			
ZAXAB 2.4 NM to RW10L			
1 NM to RW10L			
RW10L			
2040			
6.3 NM			
3 NM			
1.4 NM			
1 NM			
CATEGORY	A	B	C
LPV DA	1403/18 200 (200-½)		
LNAV/VNAV DA	1635/40 432 (500-¾)		
LNAV MDA	1620/24	417 (500-½)	1620/40 417 (500-¾)
CIRCLING	1700-1	497 (500-1)	1880-2 677 (700-2)
			1880-2¼ 677 (700-2¼)
REIL Rwy 10C HIRL all Rwy's TDZ/CL Rwy's 10L, 10R, 28L, 28R, 28C, and 32			

NE-4, 07 AUG 2025 to 04 SEP 2025

NE-4, 07 AUG 2025 to 04 SEP 2025