

| | | |
|-------------|----------|-------------|
| APP CRS | Rwy Idg | 5960 |
| 314° | TDZE | 442 |
| | Apt Elev | 442 |

GPS RWY 30
PORTERVILLE MUNI (PTV)

| | |
|-------------|--|
| T | IAF ARM APPROACH MODE PRIOR TO IAF. |
| A NA | Helicopter visibility reduction below $\frac{3}{4}$ SM NA. |

MISSED APPROACH: Climbing left turn to 3100 direct TTE VOR/DME and hold.

AWOS-3PT
134.625

BAKERFIELD APP CON★
119.075

UNICOM
122.8 (CTAF) **L**

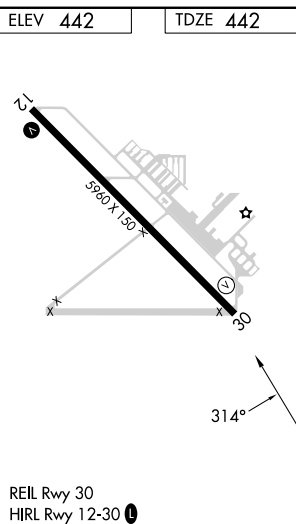
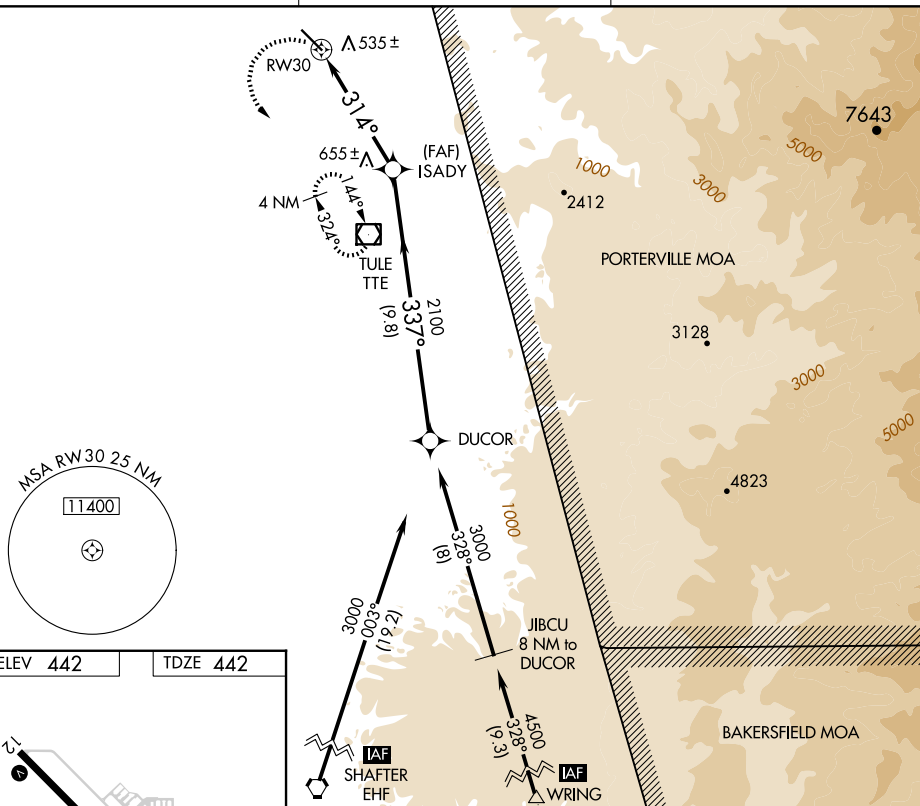


Diagram illustrating the ISADY track. The track starts at RW30, proceeds in a series of turns (314° and 337°), and ends at DUCOR. The distance from RW30 to the first turn is 5 NM, and the distance from the first turn to DUCOR is 9.8 NM. The track is labeled ISADY and 3000. The procedure turn is noted as NA.

| CATEGORY | A | B | C | D |
|----------|-------|-------------|------------------------|------------------------|
| S-30 | 900-1 | 458 (500-1) | 900-1¼ 458 (500-1¼) | 900-1½ 458 (500-1½) |
| CIRCLING | 900-1 | 458 (500-1) | 940-1½ 498 (500-1½) | 1080-2 638 (700-2) |