

WAAS CH <b>87110</b> <b>W31A</b>	APP CRS <b>306°</b>	Rwy Ldg TDZE <b>181</b> Apt Elev <b>190</b>
--	------------------------	---

RNAV (GPS) RWY 31

CASTLE (MER)

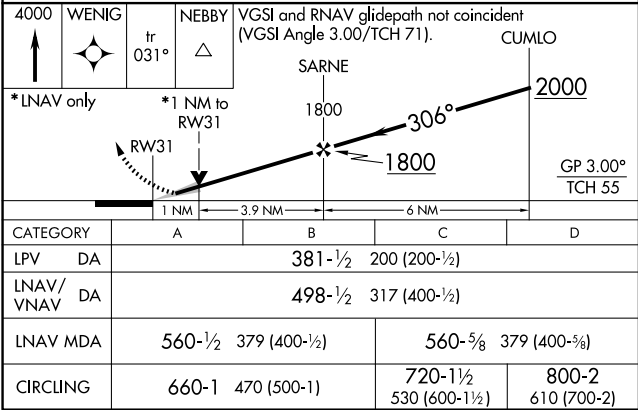
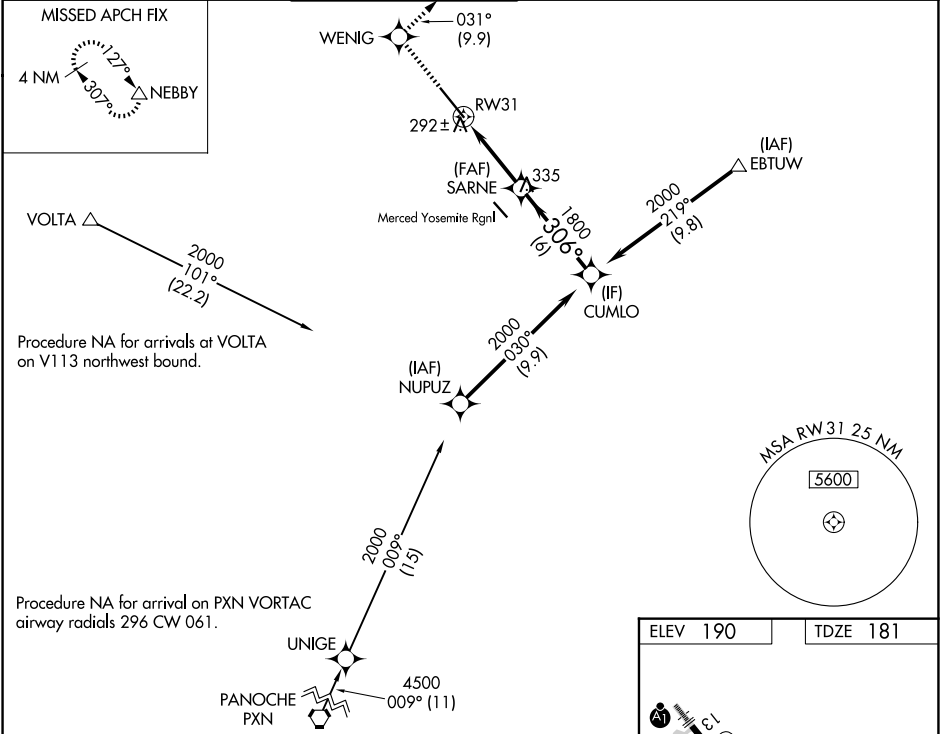
RNP APCH.

▼ Circling NA southwest of Rwy 13-31. For uncompensated Baro-VNAV systems, LNAV/VNAV NA below -15°C or above 54°C. For inoperative ALS, increase LNAV/VNAV all Cats visibility to ½ SM and LNAV C/D visibility to 1 SM.

ALSF-1

MISSED APPROACH: Climb to 4000 direct WENIG and on track 031° to NEBBY and hold, continue climb-in-hold to 4000.

ATIS <b>124.475</b>	NORCAL APP CON <b>120.95 269.45</b>	CASTLE TOWER ★ <b>118.175</b> (CTAF) <b>235.775</b>	GND CON <b>133.575</b>	UNICOM <b>122.95</b>	<b>123.0</b>
------------------------	--	--	---------------------------	-------------------------	--------------



CATEGORY	A	B	C	D
LPV DA		381-½	200 (200-½)	
LNAV/VNAV DA		498-½	317 (400-½)	
LNAV MDA	560-½	379 (400-½)	560-⅝	379 (400-⅝)
CIRCLING	660-1	470 (500-1)	720-1½ 530 (600-1½)	800-2 610 (700-2)

