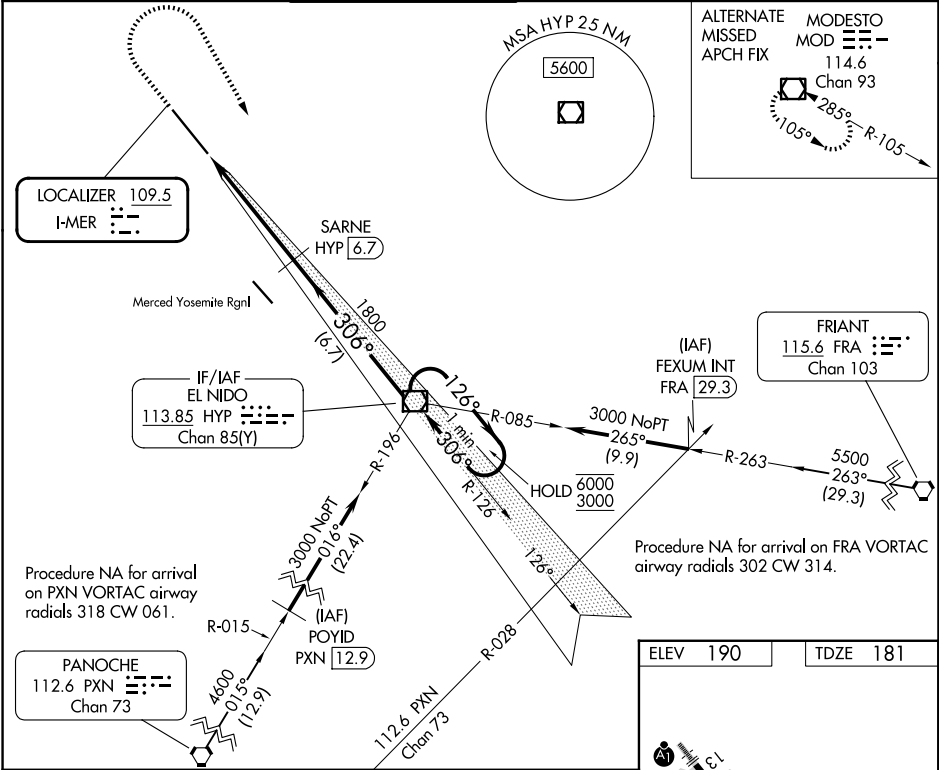


LOC I-MER	APP CRS	Rwy Ldg	11802
109.5	306°	TDZE	181
		Apt Elev	190

ILS or LOC RWY 31
CASTLE (MER)

DME required for LOC only.	ALSF-1	MISSED APPROACH: Climb to 1000 then climbing right turn to 3000 direct HYP VOR/DME and hold.
⚠ Circling NA southwest of Rwy 13-31. DME from HYP VOR/DME. Simultaneous reception of I-MER and HYP DME required.	⚠	

ATIS 124.475	NORCAL APP CON 120.95 269.45	CASTLE TOWER ★ 118.175 (CTAF) 235.775	GND CON 133.575	UNICOM 122.95	123.0 0
-----------------	---------------------------------	--	--------------------	------------------	---------



1000	3000	HYP	VGSI and ILS glidepath not coincident (VGSI Angle 3.00/TCH 71).	HYP VOR/DME	One Minute Holding Pattern
*LOC only	*HYP				
HYP 11.6	HYP 10.4				
1.2 NM	3.7 NM	6.7 NM			
CATEGORY	A	B	C	D	
S-ILS 31	381-1/2	200 (200-1/2)			
S-LOC 31	620-1/2	439 (500-1/2)	620-3/4	439 (500-3/4)	
CIRCLING	660-1	470 (500-1)	720-1 1/2	800-2	
			530 (600-1 1/2)	610 (700-2)	

