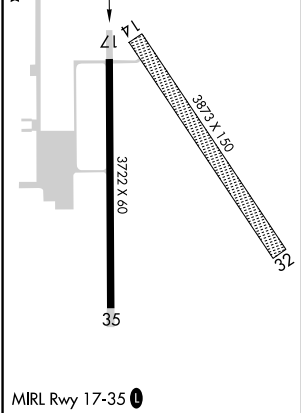
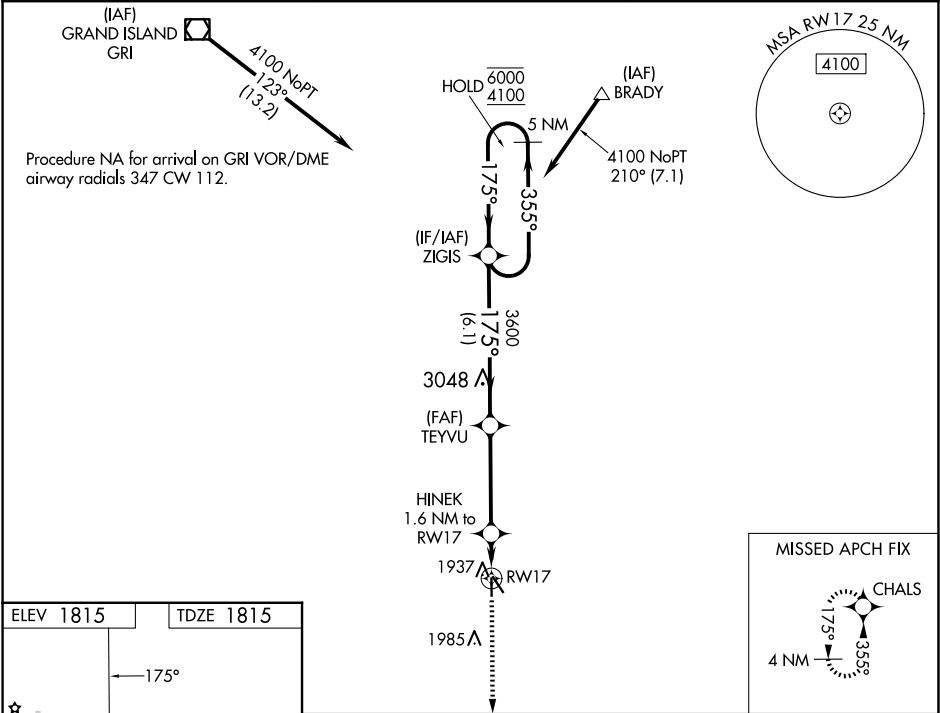


WAAS CH <b>99631</b> <b>W17A</b>	APP CRS <b>175°</b>	Rwy Idg TDZE <b>1815</b> Apt Elev <b>1815</b>
----------------------------------------	------------------------	-----------------------------------------------------

RNAV (GPS) RWY 17

HARVARD STATE (Ø8K)

RNP APCH - GPS.		MISSED APPROACH: Climb to 4000 direct CHALS and hold.
<div><div>▼</div><div>▲ NA</div></div> <div>Rwy 17 helicopter visibility reduction below ¾ SM NA. Baro-VNAV NA. Use AUH altimeter setting; when not received, use GRI altimeter setting: increase LPV DA to 2121 feet and LNAV/VNAV DA to 2136 feet; increase all MDAs 20 feet.</div>		
AUH AWOS-3 121.225	MINNEAPOLIS CENTER 119.4 278.8	CTAF 122.90



5 NM Holding Pattern		ZIGIS		TEYVU		4000 ↑		CHALS ✦	
6000 ← 355° 4100 → 175°				3600		HINEK 1.6 NM to RW17		RW17	
GP 3.00° TCH 40				3600		2360			
		6.1 NM		3.9 NM		1.6 NM			
CATEGORY	A	B		C		D			
LPV DA	2102-1	287 (300-1)				NA			
LNAV/VNAV DA	2117-1	302 (400-1)				NA			
LNAV MDA	2280-1	465 (500-1)				NA			

NC-2, 07 AUG 2025 to 04 SEP 2025

NC-2, 07 AUG 2025 to 04 SEP 2025