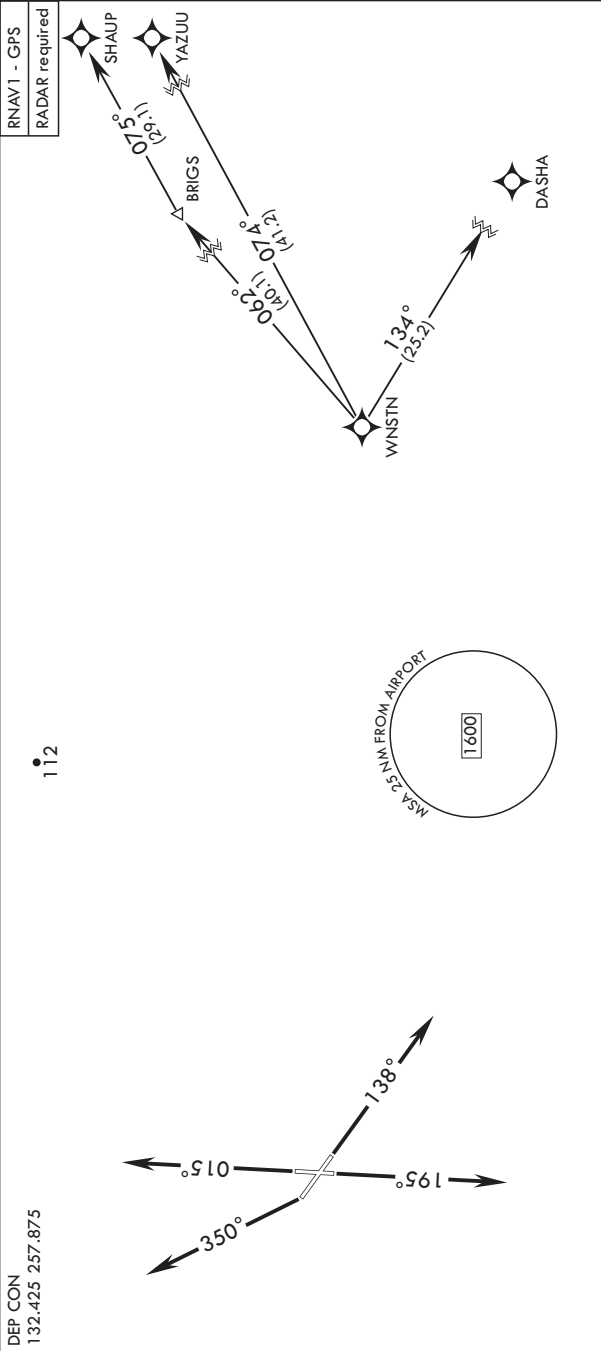


WNSTN ONE DEPARTURE (RNAV) (WNSTN1.WNSTN)

NE-3, 07 AUG 2025 to 04 SEP 2025



DEPARTURE ROUTE DESCRIPTION

TAKEOFF RWW 1, 14, 19, 32: Climb on depicted heading until vectored by ATC, maintain 3000. Expect RADAR vectors direct WNSTN, thence...

...track as depicted via assigned transition. Maintain ATC assigned altitude. Expect further clearance to filed altitude within 10 minutes after departure.

BRIGS TRANSITION (WNSTN1.BRIGS):

DASHA TRANSITION (WNSTN1.DASHA):

SHAUP TRANSITION (WNSTN1.SHAUP):

YAZUU TRANSITION (WNSTN1.YAZUU):

NE-3, 07 AUG 2025 to 04 SEP 2025