

DOVER, DELAWARE

TACAN RWY 19

TACAN DOV Chan 37	APCH CRS 204°	Rwy Idg TDZE Arpt Elev	9602 23 29
----------------------	------------------	------------------------------	------------------

-(USAF)

DOVER AFB (KDOV)

▼ * When ALS inop, increase CAT AB RVR to 55 and vis to 1 mile, CAT CDE vis to 1 3/8 miles.

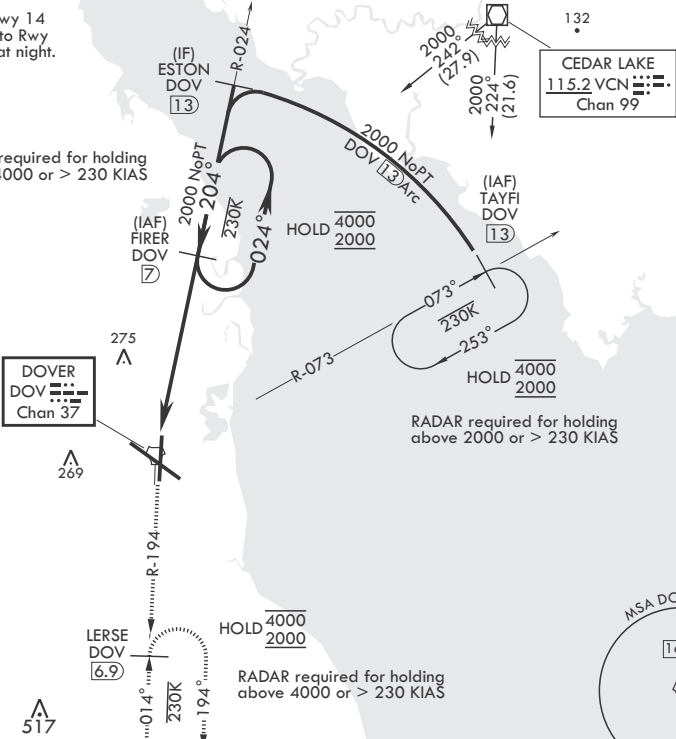


MISSED APPROACH: Climb to 2000 via DOV TACAN R-194 to LERSE/DOV 6.9 DME and hold.

ATIS 127.825 273.5	APP CON 132.425 257.875	TOWER 126.35 279.625	GND CON 118.875 225.4	CLNC DEL 125.55 289.4
-----------------------	----------------------------	-------------------------	--------------------------	--------------------------

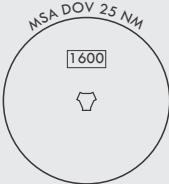
CAUTION: When Rwy 14 VGSIs inop, circling to Rwy 14 not authorized at night.

RADAR required for holding above 4000 or > 230 KIAS

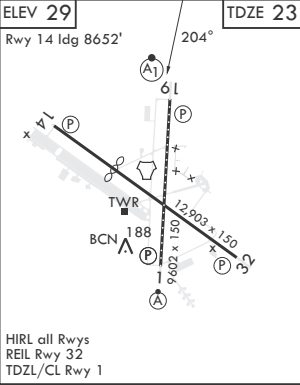
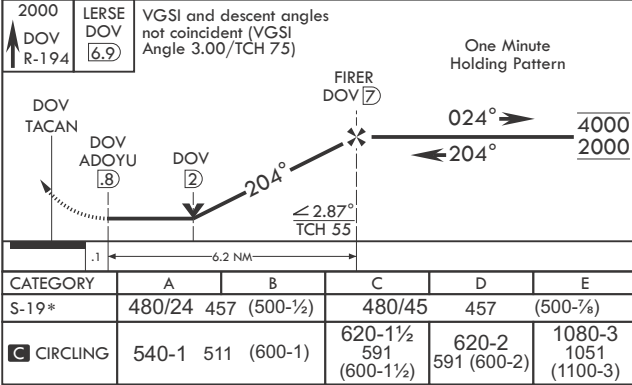


RADAR required for holding above 2000 or > 230 KIAS

RADAR required for holding above 4000 or > 230 KIAS



EMERG SAFE ALT 100 NM 4300



DOVER, DELAWARE

39°08'N - 75°28'W

DOVER AFB (KDOV)

Amtdt 4 26DEC24

TACAN RWY 19

NE-3, 07 AUG 2025 to 04 SEP 2025

NE-3, 07 AUG 2025 to 04 SEP 2025