

DOVER, DELAWARE

ILS or LOC or RNAV (GPS) RWY 19

DOVER AFB (KDOV)

| | | |
|--|-------------------------|--|
| WAAS CH 52208 W19A | APCH CRS 195° | Rwy Idg 9602 TDZE 23 Arpt Elev 29 |
|--|-------------------------|--|

[USAF]

RNP APCH. RNAV1- GPS or RADAR required for ILS, LOC

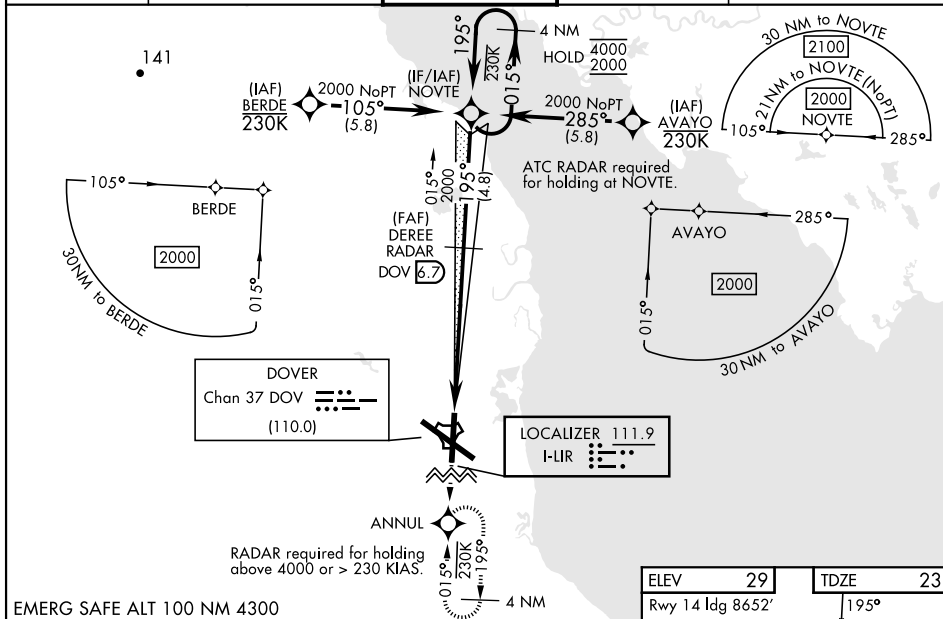
- V** * When ALS inop, increase RVR to 40, vis to $\frac{3}{4}$ mile.
RVR of 18 authorized with use of FD or AP or HUD to DA.
** When ALS inop, increase CAT AB RVR to 55, vis to 1 mile,
CAT CDE vis to $1\frac{1}{2}$ miles.
*** When ALS inop, increase CAT AB RVR to 55, vis to 1 mile,
CAT CD vis to $1\frac{1}{2}$ miles.

ALSF-1

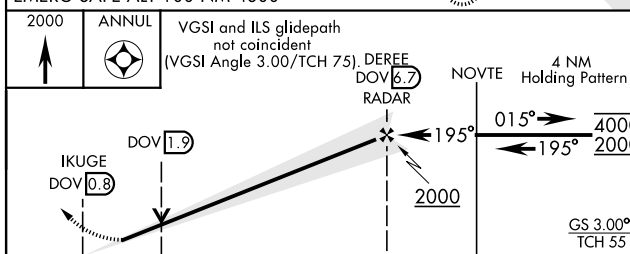
MISSED APPROACH: Climb to 2000 direct ANNUL and hold.

ALTERNATE MISSED APPROACH: Fly runway heading, climb and maintain 2000, expect radar vectors from ATC.

| | | | | | | | |
|---------------|---------|---------|----------------|---------|-------|----------|-------|
| ATIS | APP CON | | TOWER | GND CON | | CLNC DEL | |
| 127.825 273.5 | 132.425 | 257.875 | 126.35 279.625 | 118.875 | 225.4 | 125.55 | 289.4 |



EMERG SAFE ALT 100 NM 4300



| | 5.9 NM | | | | |
|-------------------|--------|-------------|------------------------|----------------------|------------------------|
| CATEGORY | A | B | C | D | E |
| S-ILS 19 * | 223/24 | | 200 | (200-½) | |
| LPV DA * | 223/24 | | 200 | (200-½) NA | |
| S-LOC 19** | 480/24 | 457 (500-½) | 480/45 457 | | (500-¾) |
| LNAV MDA *** | 480/24 | 457 (500-½) | 480/45 | 457 (500-¾) | NA |
| C CIRCLING | 540-1 | 511 (600-1) | 620-1½ 591 (600-1½) | 620-2 591 (600-2) | 1080-3 1051(1100-3) |

| | | | | | |
|-------------------|------|------|------|------|------|
| ELEV | 29 | TDZE | 23 | | |
| Rwy 14 Idg 8652' | | 195° | | | |
| | | | | | |
| HIRL all rwys | | | | | |
| REIL Rwy 32 | | | | | |
| TDZL/CL Rwy 1 | | | | | |
| FAF to MAP 5.9 NM | | | | | |
| Knots | 60 | 90 | 120 | 150 | 180 |
| Min:Sec | 5:54 | 3:56 | 2:57 | 2:22 | 1:58 |

DOVER, DELAWARE

39°08'N-75°28'W

DOVER AFB (KDOV)

Amdt 4 26DEC24

ILS or LOC or RNAV (GPS) RWY 19

NE-3, 07 AUG 2025 to 04 SEP 2025

NE-3, 07 AUG 2025 to 04 SEP 2025