

DOVER, DELAWARE

ILS or LOC or RNAV (GPS) RWY 1

WAAS CH <b>52207</b> <b>W01A</b>	APCH CRS <b>015°</b>	Rwy Idg <b>9602</b> TDZE <b>25</b> Arpt Elev <b>29</b>
--	-------------------------	--

[USAF]

DOVER AFB (KDOV)

RNP APCH: RNAV1-GPS or RADAR required for ILS, LOC.

- ▼ \* When TDZL/CL inop, increase RVR to 24, RVR of 18 authorized with use of FD or AP or HUD to DA.  
When ALS inop, increase RVR to 40, vis to ¼ mile.  
\*\* When ALS inop, increase CAT AB RVR to 55, vis to 1 mile, CAT CDE vis to 1½ miles.  
\*\*\* When ALS inop, increase CAT AB RVR to 55, vis to 1 mile, CAT CD vis to 1½ miles.

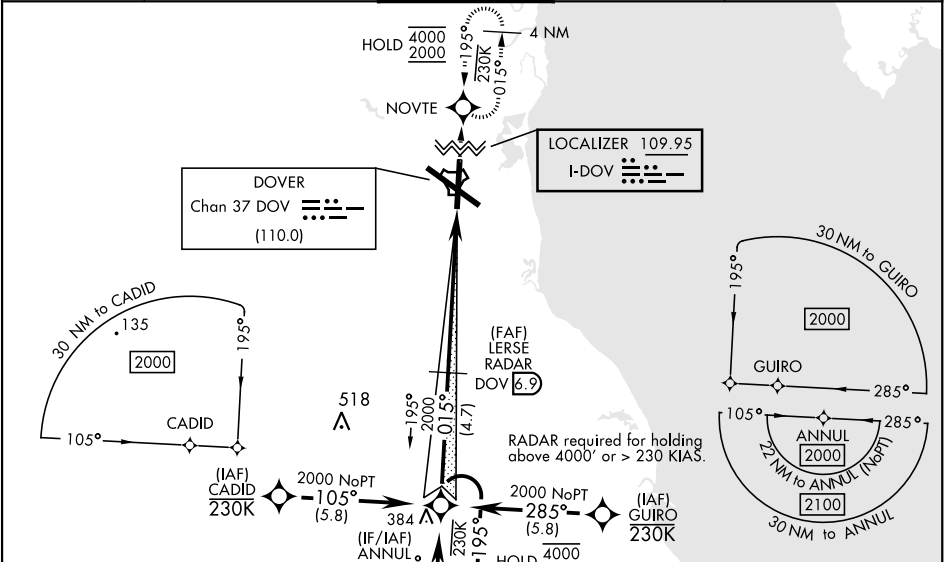
ALSF-2



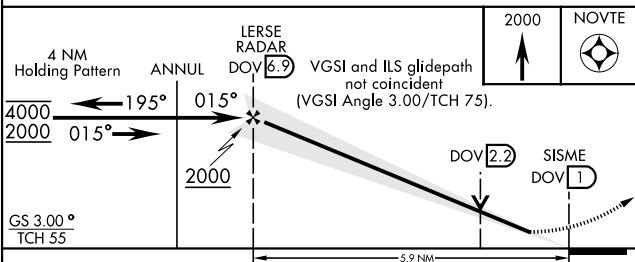
MISSED APPROACH: Climb to 2000 direct NOVTE and hold.

ALTERNATE MISSED APPROACH: Fly runway heading, climb and maintain 2000, expect radar vectors from ATC.

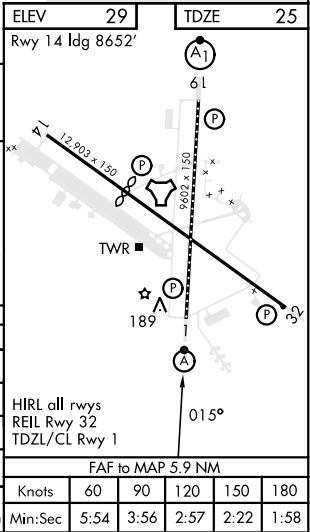
ATIS <b>127.825 273.5</b>	APP CON <b>132.425 257.875</b>	TOWER <b>126.35 279.625</b>	GND CON <b>118.875 225.4</b>	CLNC DEL <b>125.55 289.4</b>
------------------------------	-----------------------------------	--------------------------------	---------------------------------	---------------------------------



EMERG SAFE ALT 100 NM 4300



CATEGORY	A	B	C	D	E
S-ILS 1*	225/18	200	(200-½)		
LPV DA*	225/18	200	(200-½)	NA	
S-LOC 1**	500/24 475 (500-½)	500/50 475 (500-1)			
RNAV MDA***	500/24 475 (500-½)	500/50 475 (500-1)			
CIRCLING	540-1 511 (600-1)	620-1½ 591 (600-1½)	620-2 591 (600-2)	1080-3 1051 (1100-3)	



DOVER, DELAWARE

39°08'N-75°28'W

DOVER AFB (KDOV)

Amtd 2 26DEC24

ILS or LOC or RNAV (GPS) RWY 1

NE-3, 07 AUG 2025 to 04 SEP 2025

NE-3, 07 AUG 2025 to 04 SEP 2025