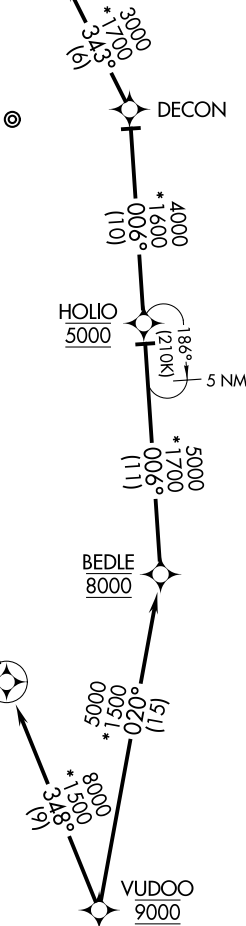


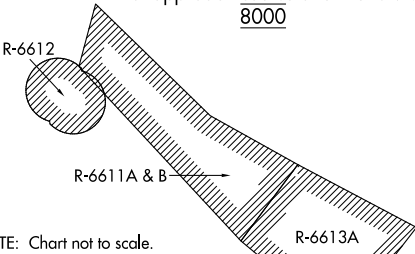
POTOMAC APP CON  
126.4 282.375  
D-ATIS  
133.675 251.05  
TOWER  
118.4 349.0

REVOE  
Landing south: Rwys 19L/R:  
Expect RADAR vectors to  
final approach course after REVOE.



NOTE: RADAR required.  
NOTE: RNAV 1.  
NOTE: DME/DME/IRU or GPS required.  
NOTE: P56 area A/B 1.5 NM north of DCA,  
avoid surface to 18000 MSL.

FUNNY  
Landing north: Rwys 1L/R:  
Expect RADAR vectors to  
final approach course after FUNNY.  
8000



NOTE: Chart not to scale.

ARRIVAL ROUTE DESCRIPTION

LANDING NORTH RWYS 1L/R: From VUDOO on track 348° to cross FUNNY at 8000, then on track 348°. Expect RADAR vectors to final approach course.

LANDING SOUTH RWYS 19L/R: From VUDOO on track 020° to cross BEDLE at 8000, then on track 006° to cross HOLIO at 5000, then on track 006° to DECON, then on track 343° to REVOE, then on track 343°. Expect RADAR vectors to final approach course.