

CAMP SPRINGS, MARYLAND

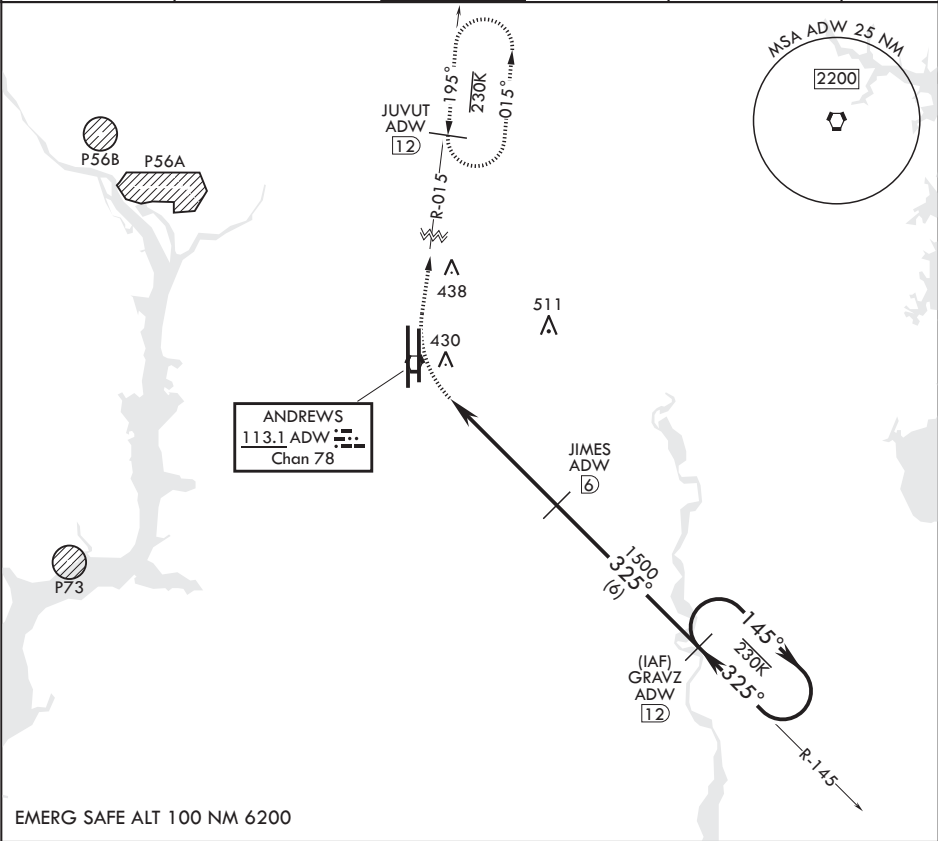
TACAN-B

VORTAC ADW 113.1 Chan 78	APCH CRS 325°	Rwy Idg TDZE Arprt Elev	N/A N/A 280
--------------------------------	------------------	-------------------------------	-------------------

(USAF) JOINT BASE ANDREWS (ANDREWS AFB) (KADW)

RADAR required	MISSED APPROACH: Climbing right turn to 2500 via ADW R-015 to JUVUT and hold.
* Circling not authorized west of Rwy 1L-19R.	

ATIS 133.675 251.05	POTOMAC APP CON 128.0 335.5	TOWER 118.4 349.0	GND CON 121.8 275.8	CLNC DEL 127.55 285.475	CPDLC
------------------------	--------------------------------	----------------------	------------------------	----------------------------	-------



EMERG SAFE ALT 100 NM 6200

2500 ADW R-015	JUVUT ADW 12	GRAVZ ADW 12		
ADW VORTAC	JOLOS ADW 1.5	JAMES ADW 6	145°	2500
4.5 NM		325°	325°	1500
CATEGORY	A	B	C	D E
CIRCLING*	780-1¼ 500 (500-1¼)		780-1½ 500 (500-1½)	840-2 560 (600-2)

ELEV 280

BCN

TWR

1L (A) 1R (A)

9756 x 150

11,201 x 200

0.3% up

325°

HIRL all rwsy TDZL/CL Rwsy 1L and 19R

CAMP SPRINGS, MARYLAND

Amdr 4 18MAY23

38°49'N - 76°52'W JOINT BASE ANDREWS (ANDREWS AFB) (KADW)

TACAN-B

NE-3, 07 AUG 2025 to 04 SEP 2025

NE-3, 07 AUG 2025 to 04 SEP 2025