

CAMP SPRINGS, MARYLAND

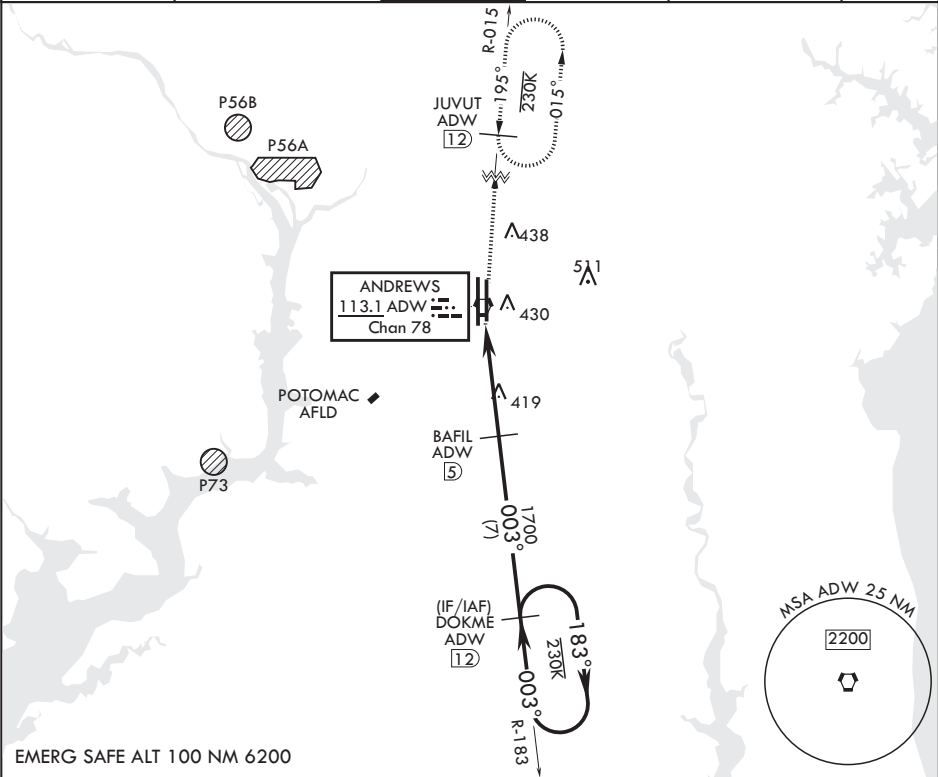
TACAN RWY 1R

VORTAC ADW 113.1 Chan 78	APCH CRS 003°	Rwy Idg TDZE Arpt Elev	9756 265 280
--------------------------------	------------------	------------------------------	--------------------

(USAF) JOINT BASE ANDREWS (ANDREWS AFB) (KADW)

RADAR required	ALSIF-1	MISSED APPROACH: Climb to 2500 via ADW VORTAC R-015 to JUVUT and hold.
* When ALS inop, increase CAT AB RVR to 55, vis to 1 mile, CAT CDE vis to 1 3/8 miles. ** Circling not authorized W of Rwy 1L-19R.		

ATIS 133.675 251.05	POTOMAC APP CON 128.0 335.5	TOWER 118.4 349.0	GND CON 121.8 275.8	CLNC DEL 127.55 285.475	CPDLC
------------------------	--------------------------------	----------------------	------------------------	----------------------------	-------



EMERG SAFE ALT 100 NM 6200

2500 ADW R-015		JUVUT ADW 12		DOKME R-183 ADW 12		ELEV 280		TDZE 265			
BCN											
TWR											
HIRL all rwys TDZL/CL Rwy 1L and 19R											
CATEGORY		A		B		C		D		E	
S-1R*		720/24		455 (500-½)		720/45		455 (500-¾)			
CIRCLING**		780-1		501 (600-1)		780-1½ 501 (600-1½)		840-2		561 (600-2)	

CAMP SPRINGS, MARYLAND

Amdt 3 18MAY23

38°49'N - 76°52'W JOINT BASE ANDREWS (ANDREWS AFB) (KADW)

TACAN RWY 1R

NE-3, 07 AUG 2025 to 04 SEP 2025

NE-3, 07 AUG 2025 to 04 SEP 2025