

CAMP SPRINGS, MARYLAND

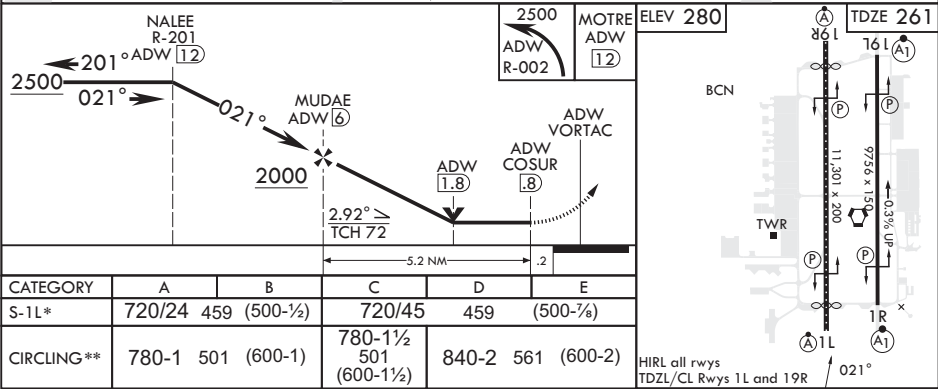
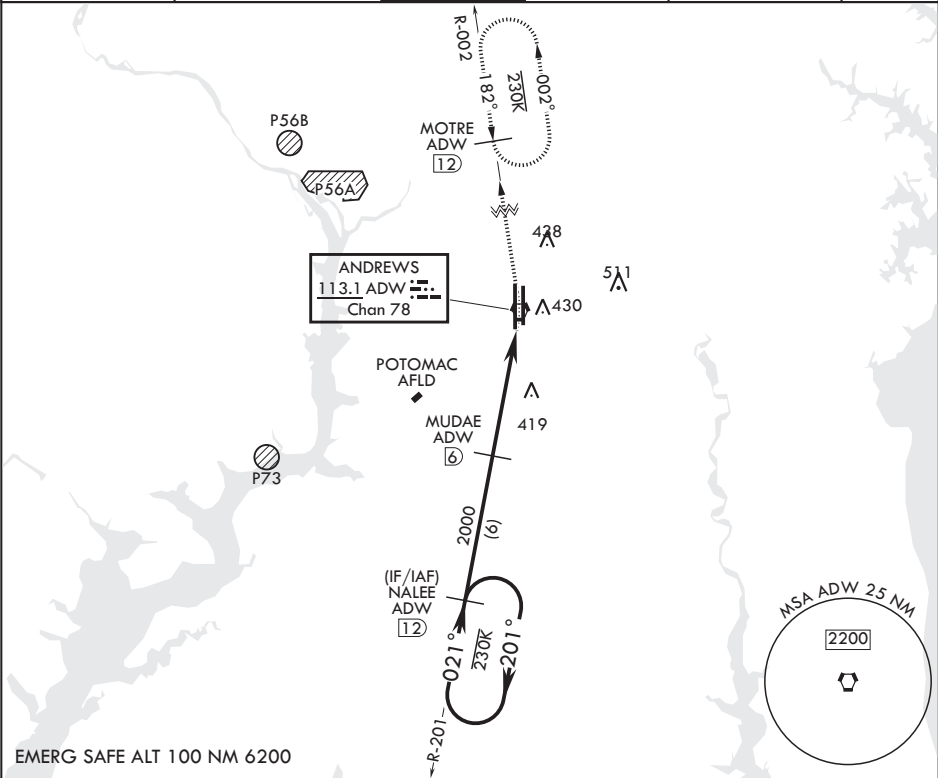
TACAN RWY 1L

VORTAC ADW 113.1 Chan 78	APCH CRS 021°	Rwy Idg TDZE Arpt Elev	10,310 261 280
--------------------------------	------------------	------------------------------	----------------------

(USAF) JOINT BASE ANDREWS (ANDREWS AFB) (KADW)

RADAR required	ALSIF-2	MISSED APPROACH: Climb to 2500 via ADW VORTAC R-002 to MOTRE/ADW 12 DME and hold.
* When ALS inop, increase CAT AB RVR to 55, vis to 1 mile, CAT CDE vis to 1 3/8 miles. ** Circling not authorized W of Rwy 1L-19R.		

ATIS 133.675 251.05	POTOMAC APP CON 128.0 335.5	TOWER 118.4 349.0	GND CON 121.8 275.8	CLNC DEL 127.55 285.475	CPDLC
------------------------	--------------------------------	----------------------	------------------------	----------------------------	-------



CAMP SPRINGS, MARYLAND

Amdt 2 18MAY23

38°49'N - 76°52'W JOINT BASE ANDREWS (ANDREWS AFB) (KADW)

TACAN RWY 1L

NE-3, 07 AUG 2025 to 04 SEP 2025

NE-3, 07 AUG 2025 to 04 SEP 2025