

CAMP SPRINGS, MARYLAND

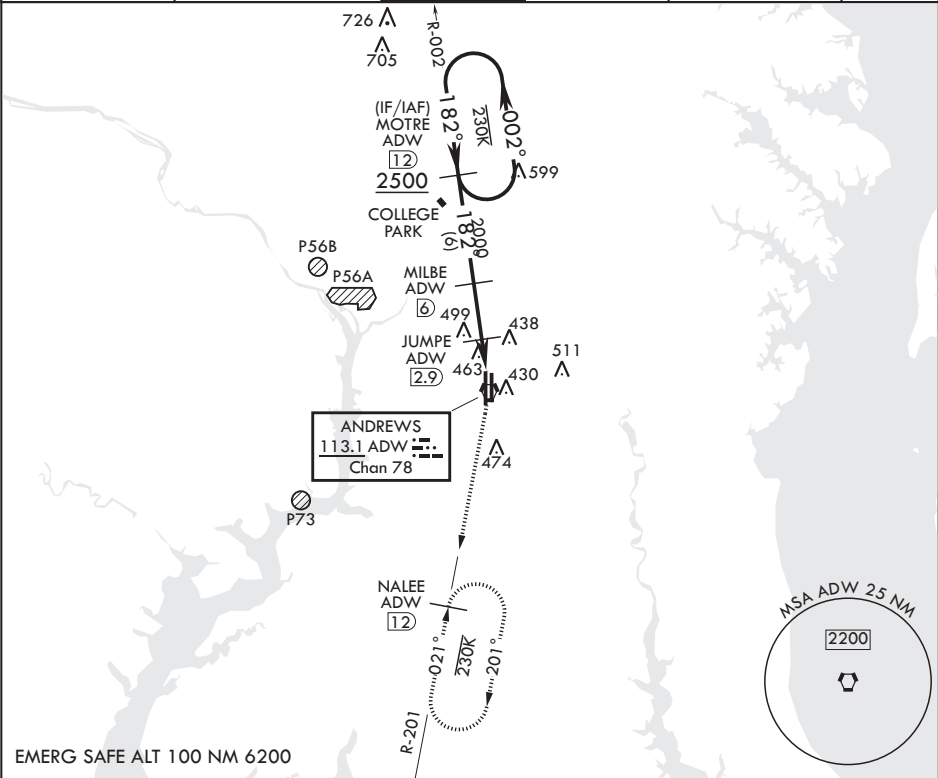
TACAN RWY 19R

VORTAC ADW 113.1 Chan 78	APCH CRS 182°	Rwy Idg TDZE Arpt Elev	10,309 274 280
--------------------------------	------------------	------------------------------	----------------------

(USAF) JOINT BASE ANDREWS (ANDREWS AFB) (KADW)

RADAR required	ALSIF-2	MISSED APPROACH: Climbing to 2500, intercept ADW VORTAC R-201 to NALEE and hold.
* When ALS inop, increase CAT AB RVR to 55, vis to 1 mile, CAT CDE vis to 1 3/8 miles. ** Circling not authorized W of Rwy 1L-19R.		

ATIS 133.675 251.05	POTOMAC APP CON 128.0 335.5	TOWER 118.4 349.0	GND CON 121.8 275.8	CLNC DEL 127.55 285.475	CPDLC
------------------------	--------------------------------	----------------------	------------------------	----------------------------	-------



EMERG SAFE ALT 100 NM 6200		MOTRE R-002 ADW 12		2500		NALEE ADW 12		ELEV 280		TDZE 274	
2500		182°		182°		182°		182°		182°	
MOTRE R-002 ADW 12		MILBE ADW 6		JUMPE ADW 2.9		ADW 2.2		BIMKE ADW 1.2		ADW VORTAC	
↑ MILBE to MAP		3.11°		TCH 71		3.1 NM		1.7 NM		.2	
CATEGORY	A	B	C	D	E						
S-19R*	740/24	466 (500-½)	740/50	466	(500-1)						
CIRCLING**	780-1	501 (600-1)	780-1½ 501 (600-1½)	840-2	561 (600-2)						
BCN		TWR		HIRL all rwys		TDZL/CL Rwy 1L and 19R					

CAMP SPRINGS, MARYLAND

Amdt 2 18MAY23

38°49'N - 76°52'W JOINT BASE ANDREWS (ANDREWS AFB) (KADW)

TACAN RWY 19R

NE-3, 07 AUG 2025 to 04 SEP 2025

NE-3, 07 AUG 2025 to 04 SEP 2025