


CAMP SPRINGS, MARYLAND

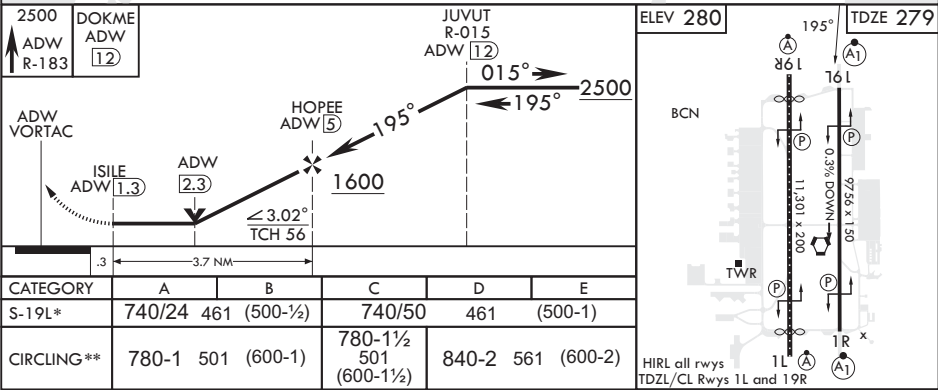
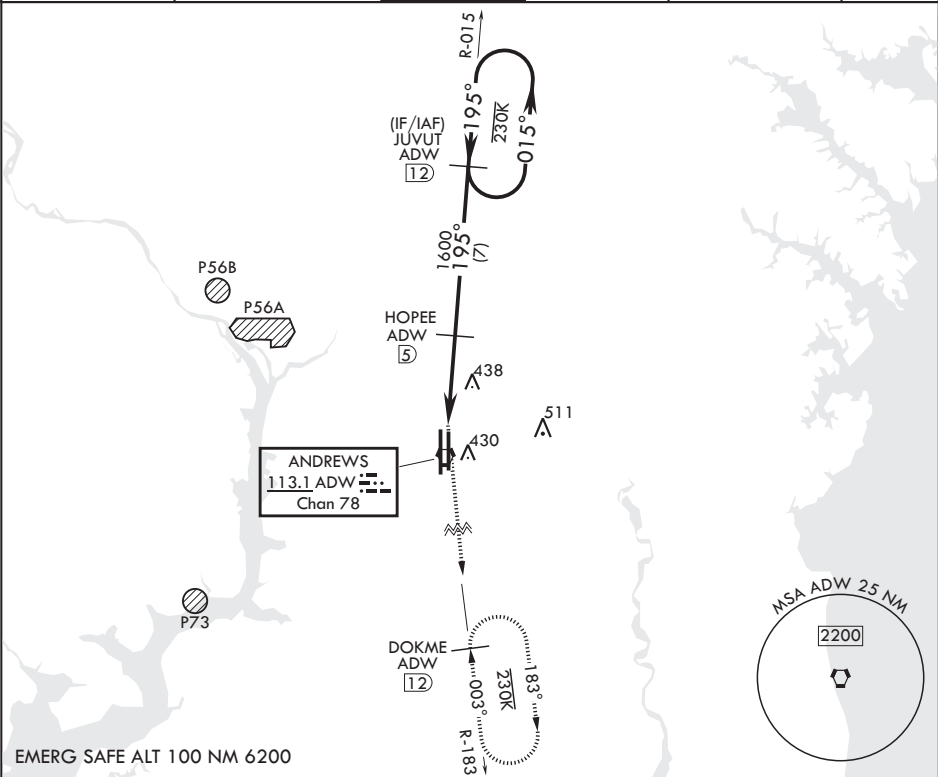
TACAN RWY 19L

VORTAC ADW 113.1 Chan 78	APCH CRS 195°	Rwy Idg TDZE 279 Arpt Elev 280
--------------------------------	------------------	--

(USAF) JOINT BASE ANDREWS (ANDREWS AFB) (KADW)

RADAR required	ALSF-1 	MISSED APPROACH: Climbing to 2500 via ADW VORTAC R-183 to DOKME and hold.
* When ALS inop, increase CAT AB RVR to 55, vis to 1 mile, CAT CDE vis to 1 3/8 miles. ** Circling not authorized W of Rwy 1L-19R.		

ATIS 133.675 251.05	POTOMAC APP CON 128.0 335.5	TOWER 118.4 349.0	GND CON 121.8 275.8	CLNC DEL 127.55 285.475	CPDLC
------------------------	--------------------------------	----------------------	------------------------	----------------------------	-------



CAMP SPRINGS, MARYLAND 38°49'N - 76°52'W JOINT BASE ANDREWS (ANDREWS AFB) (KADW)

Amdt 3 18MAY23

TACAN RWY 19L

NE-3, 07 AUG 2025 to 04 SEP 2025

NE-3, 07 AUG 2025 to 04 SEP 2025