

CAMP SPRINGS, MARYLAND

RNAV (RNP) Y RWY 1L

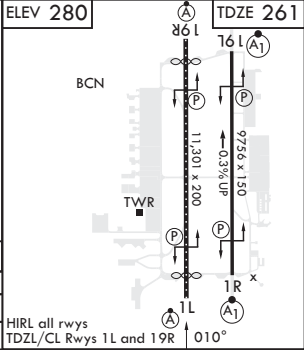
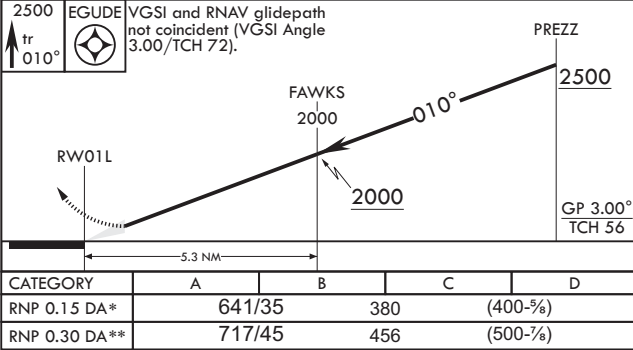
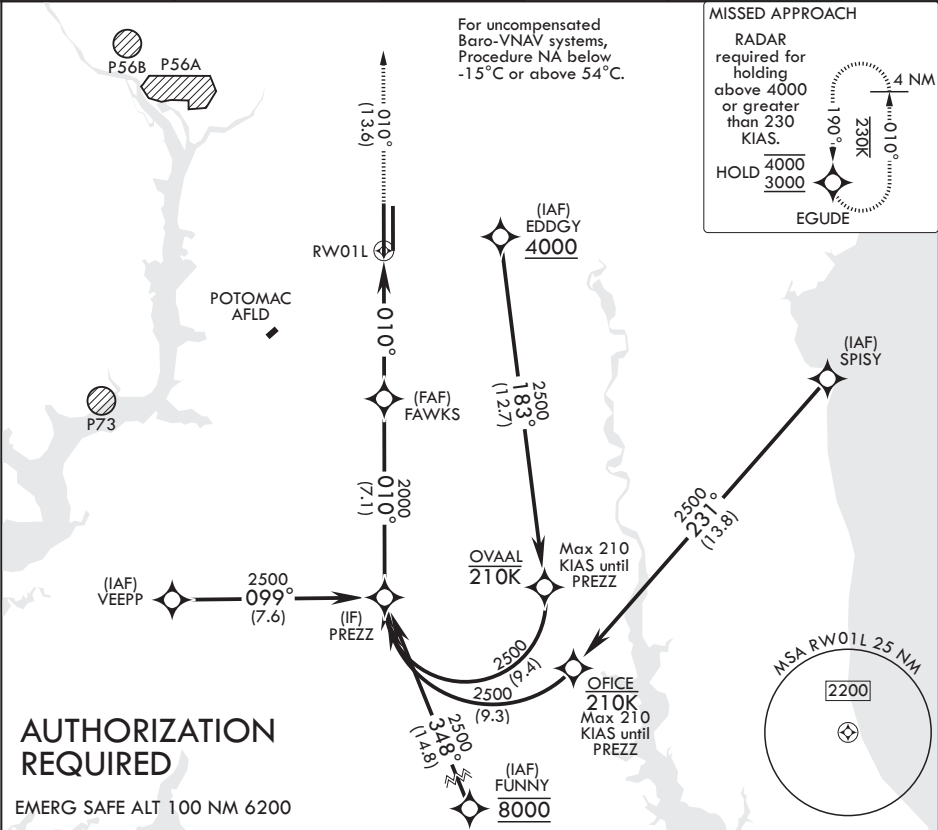
APCH CRS	Rwy Idg	10,310
010°	TDZE	261
	Arprt Elev	280

(USAF) JOINT BASE ANDREWS (ANDREWS AFB) (KADW)

RNP AR APCH. From SPISY, EDDGY: RF.  
\* When ALS inop, increase RVR to 55, vis to 1 mile.  
\*\* When ALS inop, increase vis to 1 3/8 miles.

ALSF-2 MISSED APPROACH: Climb to 2500 on track 010° to EGUDE and hold.

ATIS 133.675 251.05	POTOMAC APP CON 128.0 335.5	TOWER 118.4 349.0	GND CON 121.8 275.8	CLNC DEL 127.55 285.475	CPDLC
------------------------	--------------------------------	----------------------	------------------------	----------------------------	-------



CAMP SPRINGS, MARYLAND

Amndt 2 18MAY23

38°49'N - 76°52'W JOINT BASE ANDREWS (ANDREWS AFB) (KADW)

RNAV (RNP) Y RWY 1L

NE-3, 07 AUG 2025 to 04 SEP 2025

NE-3, 07 AUG 2025 to 04 SEP 2025