

CAMP SPRINGS, MARYLAND

WAAS CH 52206 W01B	APCH CRS 010°	Rwy ldg TDZE 265 Arprt Elev 280
--------------------------	------------------	---------------------------------------

(USAF) JOINT BASE ANDREWS (ANDREWS AFB) (KADW)

RNAV (GPS) RWY 1R

DME/DME RNP-0.3 NA

▲ * When ALS inop increase RVR to 40, vis to 3/4 mile.
** When ALS inop, increase RVR to 60, vis to 1 1/8 miles.
*** When ALS inop, increase CAT AB RVR to 55, vis to 1 mile;
CAT CDE RVR to 60, vis to 1 1/8 miles.

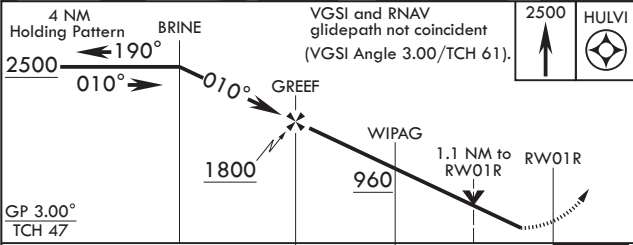
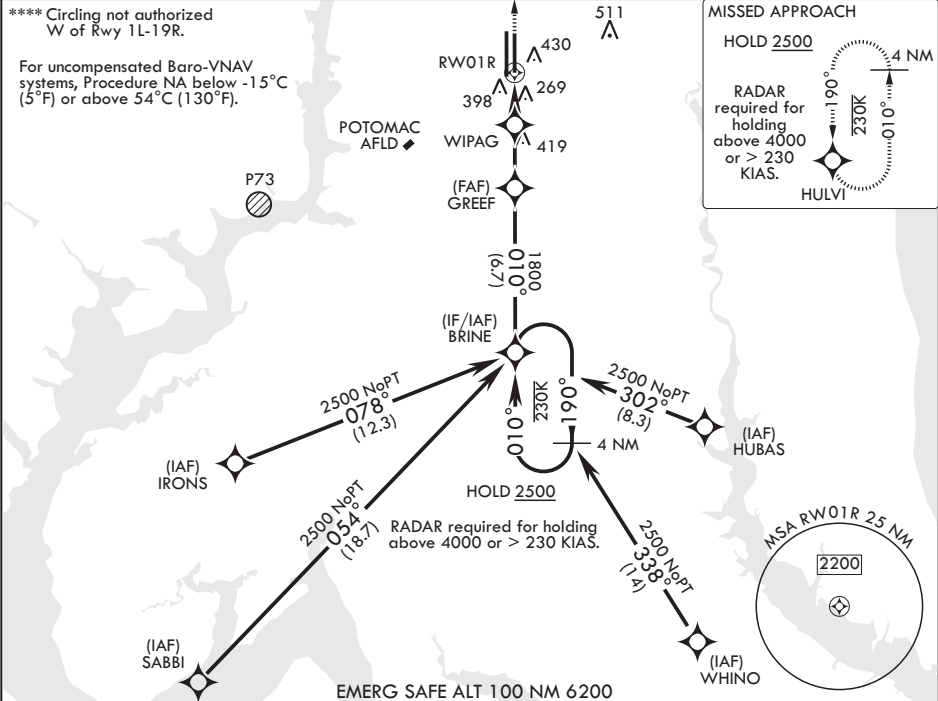
ALSF-1

MISSED APPROACH: Climb to 2500 direct HULVI and hold.

ATIS 133.675 251.05	POTOMAC APP CON 128.0 335.5	TOWER 118.4 349.0	GND CON 121.8 275.8	CLNC DEL 127.55 285.475	CPDLC
------------------------	--------------------------------	----------------------	------------------------	----------------------------	-------

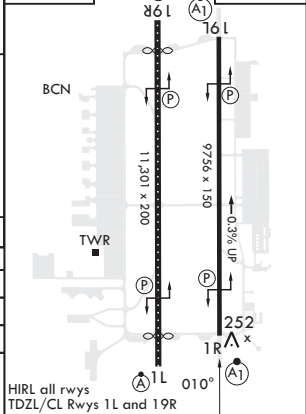
**** Circling not authorized
W of Rwy 1L-19R.

For uncompensated Baro-VNAV
systems, Procedure NA below -15°C
(5°F) or above 54°C (130°F).



ELEV 280 TDZE 265

CATEGORY	A	B	C	D	E
LPV DA*	465/24	200	(200-½)		
LNAV/VNAV DA**	660/35	395	(400-¾)		
LNAV MDA***	660/24 395 (400-½)	660/35 395 (400-¾)			
CIRCLING****	780-1 500 (500-1)	780-1½ 500 (500-1½)	840-2 560 (600-2)		



CAMP SPRINGS, MARYLAND

Amdt 3 18MAY23

38°49'N - 76°52'W JOINT BASE ANDREWS (ANDREWS AFB) (KADW)

RNAV (GPS) RWY 1R

NE-3, 07 AUG 2025 to 04 SEP 2025

NE-3, 07 AUG 2025 to 04 SEP 2025