

## RNAV (GPS) RWY 19R

WAAS CH 52204 W19B	APCH CRS 190°	Rwy Idg 10,309 TDZE 274 Arpt Elev 280
--------------------------	------------------	---

(USAF) JOINT BASE ANDREWS (ANDREWS AFB) (KADW)

DME/DME RNP-0.3 NA

ALSF-2

**MISSED APPROACH:** Climb to 2500 direct PREZZ and hold

**T** \* When ALS inop, increase RVR to 40, vis to 3/4.  
When TDZ/CL lights inop, increase RVR to 24.  
\*\* When ALS inop, increase vis to 1 1/4 miles.  
\*\*\* When ALS inop, increase CAT AB RVR to 55, vis to 1 mile; CAT CDE vis to 1 1/4 miles.

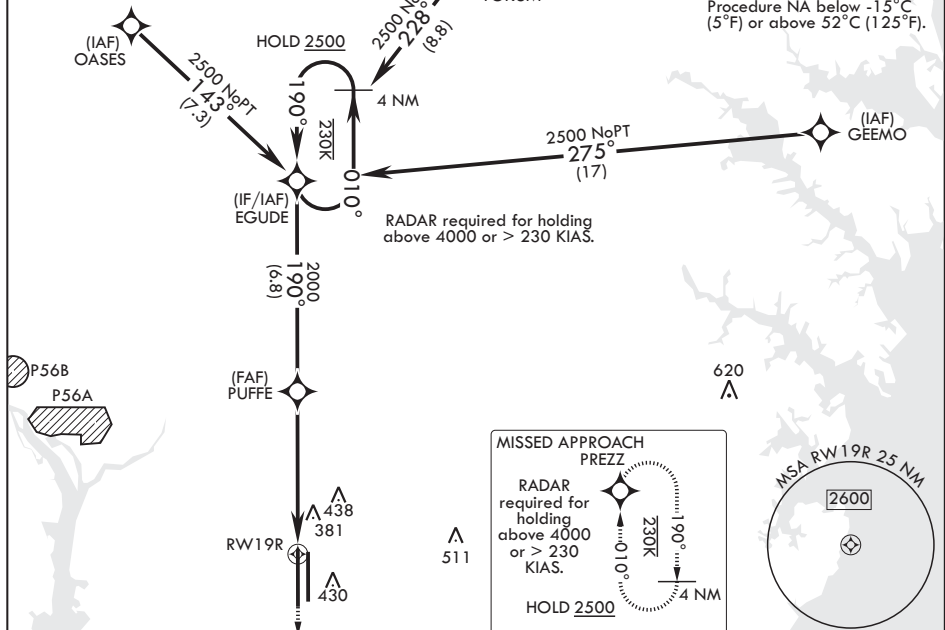


ATIS 133.675 251.05	POTOMAC APP CON 128.0 335.5	TOWER 118.4 349.0	GND CON 121.8 275.8	CLNC DEL 127.55 285.475	CPDLC
------------------------	--------------------------------	----------------------	------------------------	----------------------------	-------

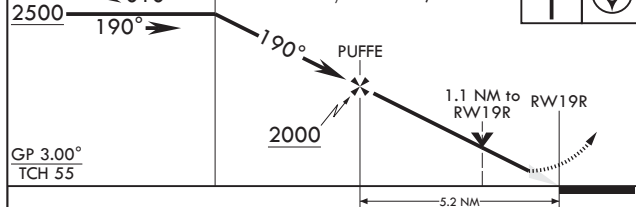
\*\*\*\* Circling not authorized  
W of Rwy 1L-19R.

(IAF)  
YOKUM

For uncompensated  
Baro-VNAV systems,  
Procedure NA below -15°C  
(5°F) or above 52°C (125°F).

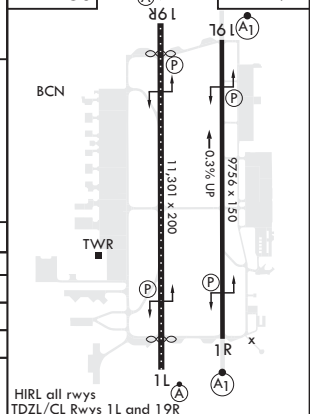


4 NM Holding Pattern  
EGUDE  
010°  
VGSI and RNAV glidepath not coincident (VGSI Angle 3.00/TCH 70.62).



CATEGORY	A	B	C	D	E
LPV DA*	474/18		200	(200-½)	
LNAV/VNAV DA**	697/40		423	(500-¾)	
LNAV MDA***	700/24	426 (500-½)	700/40	426	(500-¾)
CIRCLING****	780-1	500 (500-1)	780-1½ 500 (500-1½)	840-2	560 (600-2)

ELEV 280	190°	TDZE 274
----------	--	----------



## RNAV (GPS) RWY 19R