

CAMP SPRINGS, MARYLAND

WAAS CH 52203 W19A	APCH CRS 190°	Rwy ldg TDZE Arpt Elev	9756 279 280
--------------------------	------------------	------------------------------	--------------------

RNAV (GPS) RWY 19L

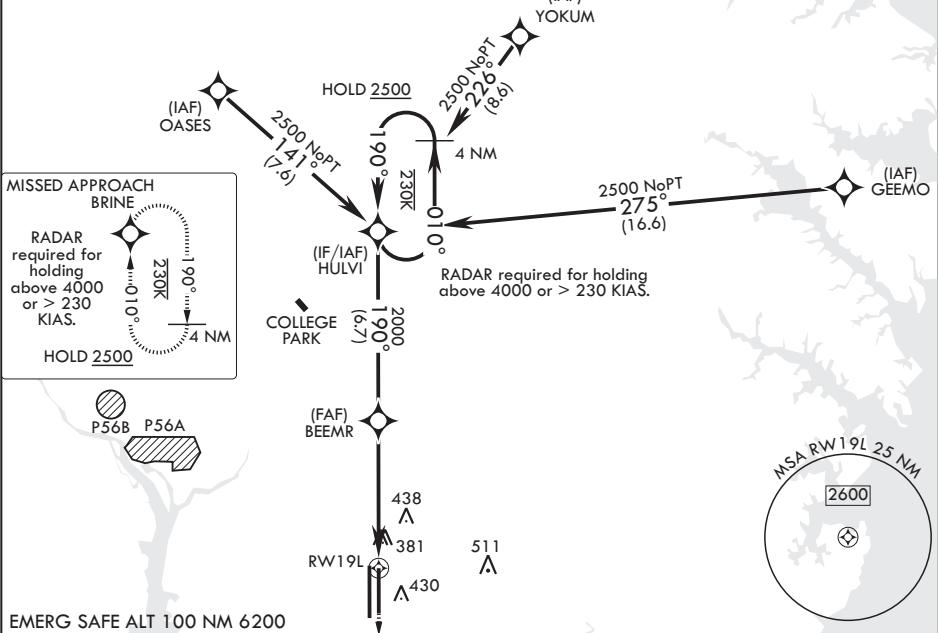
(USAF) JOINT BASE ANDREWS (ANDREWS AFB) (KADW)

DME/DME RNP-0.3 NA	ALSF-1	MISSED APPROACH: Climb to 2500 direct BRINE and hold.
* When ALS inop, increase RVR to 40, vis to 3/4 mile. ** When ALS inop, increase RVR to 60, vis to 1 1/8 miles. *** When ALS inop, increase CAT AB RVR to 55, vis to 1 mile; CAT CDE RVR to 60, vis to 1 1/8 miles.		

ATIS 133.675 251.05	POTOMAC APP CON 128.0 335.5	TOWER 118.4 349.0	GND CON 121.8 275.8	CLNC DEL 127.55 285.475	CPDLC
------------------------	--------------------------------	----------------------	------------------------	----------------------------	-------

**** Circling not authorized W of Rwy 1L-19R.
Visibility reduction by helicopters NA.

For uncompensated Baro-VNAV systems, Procedure NA below -15°C (5°F) or above 54°C (130°F).



4 NM Holding Pattern	HULVI	2500	BRINE	ELEV 280	TDZE 279
GP 3.00° TCH 56	190°	190°	190°	190°	190°
5.2 NM	1.1 NM to RWY 19L	1.1 NM to RWY 19L	1.1 NM to RWY 19L	1.1 NM to RWY 19L	1.1 NM to RWY 19L
CATEGORY	A	B	C	D	E
LPV DA*	479/24	200	(200-½)		
LNAV/VNAV DA**	680/40	401	(400-¾)		
LNAV MDA***	680/24 401 (400-½)	680/40 401 (400-¾)			
CIRCLING****	780-1 500 (500-1)	780-1½ 500 (500-1½)	840-2 560 (600-2)		

CAMP SPRINGS, MARYLAND

Amdt 1 18MAY23

38°49'N - 76°52'W JOINT BASE ANDREWS (ANDREWS AFB) (KADW)

RNAV (GPS) RWY 19L

NE-3, 07 AUG 2025 to 04 SEP 2025

NE-3, 07 AUG 2025 to 04 SEP 2025