

CAMP SPRINGS, MARYLAND

ILS or LOC RWY 1R

(USAF) JOINT BASE ANDREWS (ANDREWS AFB) (KADW)

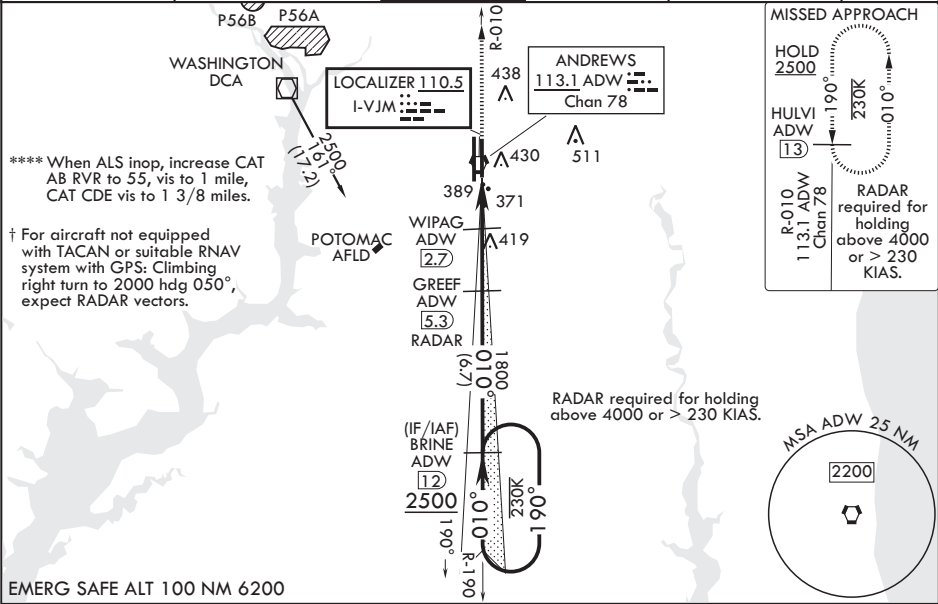
LOC I-VJM <b>110.5</b>	APCH CRS <b>010°</b>	Rwy Idg TDZE Arpt Elev	<b>9756</b> <b>265</b> <b>280</b>
---------------------------	-------------------------	------------------------------	---

RADAR required  
RADAR or DME required at FAF

⚠ \* When ALS inop, increase RVR to 40, vis to 3/4 mile. RVR 18 authorized with use of Flight Director System or Autopilot System or Heads-Up-Display to DA.  
\*\* When ALS inop, increase RVR to 55, vis to 1 mile.  
\*\*\* Circling not authorized W of Rwy 1L-19R.

ALS-F-1  
⚠ MISSED APPROACH:  
Climb to 2500 via ADW  
VORTAC R-010 to  
HULVI/ADW 13 DME  
and hold.

ATIS <b>133.675 251.05</b>	POTOMAC APP CON <b>128.0 335.5</b>	TOWER <b>118.4 349.0</b>	GND CON <b>121.8 275.8</b>	CLNC DEL <b>127.55 285.475</b>	CPDLC
-------------------------------	---------------------------------------	-----------------------------	-------------------------------	-----------------------------------	-------



BRINE  
ADW [12]

2500

190°

010°

010°

1800

980

2.6 NM

2.1 NM

GS 3.00°  
TCH 47

GREEF  
ADW [5.3]  
RADAR

WIPAG  
ADW [2.7]

ADW [1.6]

AREKE  
ADW [6]

ADW VORTAC

VGSI and ILS  
glidepath not  
coincident (VGSI  
Angle 3.00/TCH 61).

2500  
ADW  
R-010

HULVI  
ADW  
[13]

ELEV 280

TDZE 265

BCN

TWR

11,301 x 200

19R

010°

HIRL all rwys  
TDZL/CL Rwy 1L and 19R

CATEGORY	A	B	C	D	E
S-ILS 1R*	465/24		200	(200-½)	
S-LOC 1R**	640/24	375 (400-½)	640/35	375	(400-¾)
CIRCLING***	780-1	500 (500-1)	780-1½ 500 (500-1½)	840-2	560 (600-2)
NON-DME					
S-LOC 1R****	720/24	455 (500-½)	720/45	455	(500-¾)
CIRCLING***	780-1	500 (500-1)	780-1½ 500 (500-1½)	840-2	560 (600-2)

FAF to MAP 4.7 NM					
Knots	60	90	120	150	180
Min:Sec	4:42	3:08	2:21	1:53	1:34

CAMP SPRINGS, MARYLAND

Amdt 1 18MAY23

38°49'N - 76°52'W JOINT BASE ANDREWS (ANDREWS AFB) (KADW)

ILS or LOC RWY 1R

NE-3, 07 AUG 2025 to 04 SEP 2025

NE-3, 07 AUG 2025 to 04 SEP 2025