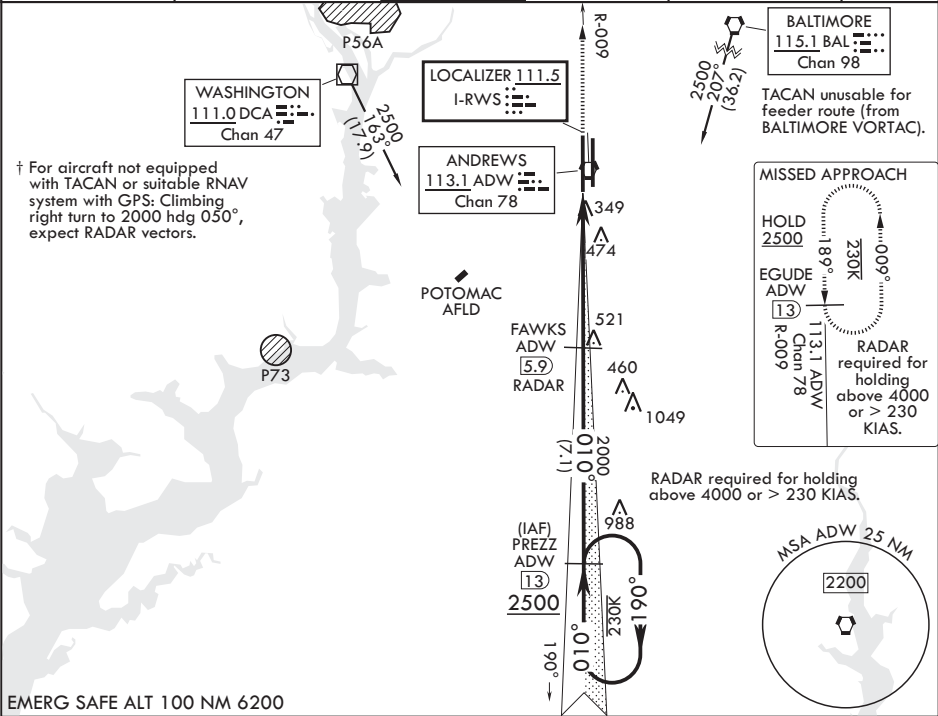


LOC I-RWS	APCH CRS	Rwy Idg	10,310
111.5	010°	TDZE	261
		Arpt Elev	280

(USAF) JOINT BASE ANDREWS (ANDREWS AFB) (KADW)

RADAR or DME required	ALSIF-2	† MISSED APPROACH: Climbing to 2500, intercept ADW VORTAC R-009 to EGUDE and hold.
▼ * When ALS inop increase RVR to 40, vis to 3/4 mile. When TDZL/CL inop, increase RVR to 24. ** When ALS inop, increase CAT AB RVR to 55, vis to 1 mile, CAT CDE RVR to 60, vis to 1 1/8 miles. *** Circling not authorized W of Rwy 1L-19R.		

ATIS 133.675 251.05	POTOMAC APP CON 128.0 335.5	TOWER 118.4 349.0	GND CON 121.8 275.8	CLNC DEL 127.55 285.475	CPDLC
------------------------	--------------------------------	----------------------	------------------------	----------------------------	-------



					PREZZ ADW 13	EGUDE ADW 13	ELEV 280	TDZE 261
VGSI and ILS glidepath not coincident (VGSI Angle 3.00/TCH 72).					FAWKES ADW 5.9 RADAR	ADW 1.7	GUTRE ADW .8	
GS 3.00° TCH 55					2500	2000	190°	010°
5.1 NM					0.2			
CATEGORY	A	B	C	D	E			
S-ILS 1L*	461/18		200	(200-½)				
S-LOC 1L**	680/24	419 (400-½)	680/40	419	(400-¾)			
CIRCLING***	780-1	500 (500-1)	780-1½ 500 (500-1½)	840-2	560 (600-2)			
						FAF to MAP 5.1 NM		
						Knots		
						60 90 120 150 180		
						Min:Sec		
						5:06 3:24 2:33 2:02 1:42		