

CAMP SPRINGS, MARYLAND

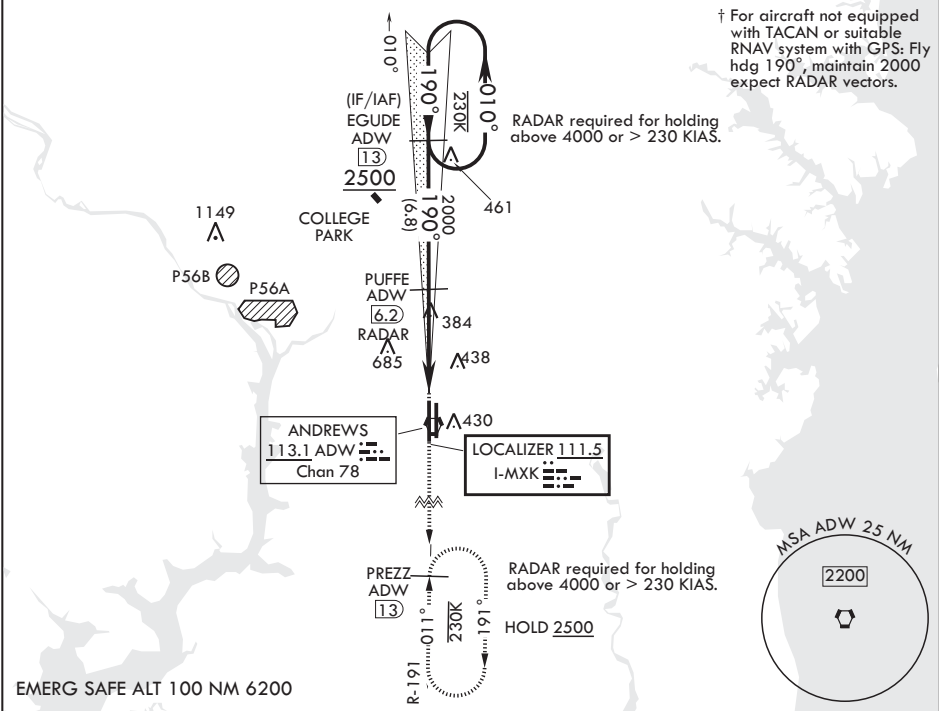
ILS or LOC RWY 19R

LOC I-MXK 111.5	APCH CRS 190°	Rwy Idg TDZE Arpt Elev	10,309 274 280
---------------------------	-------------------------	------------------------------	---

(USAF) JOINT BASE ANDREWS (ANDREWS AFB) (KADW)

RADAR or DME required		ALSF-2	† MISSED APPROACH: Climb to 2500, intercept ADW VORTAC R-191 to PREZZ and hold.
* When ALS inop, increase RVR to 40, vis to 3/4 mile. When TDZL/CL inop, increase RVR to 24. ** When ALS inop, increase CAT AB RVR to 55, vis to 1 mile, CAT CDE RVR to 60, vis to 1 1/8 miles. *** Circling NA West of Rwy 1L-19R.			

ATIS 133.675 251.05	POTOMAC APP CON 128.0 335.5	TOWER 118.4 349.0	GND CON 121.8 275.8	CLNC DEL 127.55 285.475	CPDLC
-------------------------------	---------------------------------------	-----------------------------	-------------------------------	-----------------------------------	-------



EGUDE ADW 13		2500	PREZZ ADW 13	ELEV 280	190°	TDZE 274
2500		190°	PUFFE ADW 6.2	ADW 2.1	BARLE ADW 1.5	
VGSi and ILS glidepath not coincident (VGSi Angle 3.00/TCH 71).		2000				
GS 3.00°						
TCH 55						
		4.7 NM	0.5			
CATEGORY	A	B	C	D	E	
S-ILS 19R*	474/18		200	(200-½)		
S-LOC 19R**	660/24	386 (400-½)	660/35	386	(400-¾)	
CIRCLING***	780-1	500 (500-1)	780-1½ 500 (500-1½)	840-2	560 (600-2)	
HIRL all rwys TDZL/CL Rwy 1L and 19R						
FAF to MAP 4.7 NM						
Knots						60 90 120 150 180
Min:Sec						4:42 3:08 2:21 1:53 1:34

CAMP SPRINGS, MARYLAND

Amtr 4 06OCT22

38°49'N - 76°52'W JOINT BASE ANDREWS (ANDREWS AFB) (KADW)

ILS or LOC RWY 19R

NE-3, 07 AUG 2025 to 04 SEP 2025

NE-3, 07 AUG 2025 to 04 SEP 2025